

# Department — Office of the City Manager

## Introduction

The City Manager is the Chief Administration Officer for the City of Edmonton as defined by the Government of Alberta Municipal Government Act and the City Administration Bylaw.

The Office of the City Manager provides overall corporate and strategic direction to the Corporation of the City of Edmonton. Corporate Communications and Intergovernmental and External Affairs are part of Office of the City Manager, along with an administration section.

Corporate Communications Branch is responsible for ensuring the City of Edmonton image, reputation and brand are maintained and enhanced. The two-way communications between Edmontonians and City staff who deliver services is strategically planned and supported by Corporate Communications. The Branch is responsible for media relations, on-line communications planning, public involvement, crisis management, advertising and publications.

Intergovernmental and External Affairs Branch develops, implements and supports strategies and initiatives to assist the City of Edmonton in fostering relationships with and influencing other orders of government and external stakeholders. The Branch is also responsible for attracting major events to Edmonton.

Increasing the City of Edmonton workforce capacity continues to be a priority of the City Manager. This includes:

- working as a corporation by acting as “one city”;
- having clear roles and responsibilities;
- focusing on citizens and their experiences with City services;
- continuing to strengthen accountability and transparency;
- setting and monitoring performance measures that measure progress on implementing the six *Ways* plans; and
- engaging employees in the goal of fostering innovation to deliver more responsive, cost-effective services, and enhancing the confidence and trust of Edmontonians.

## Branches and Programs

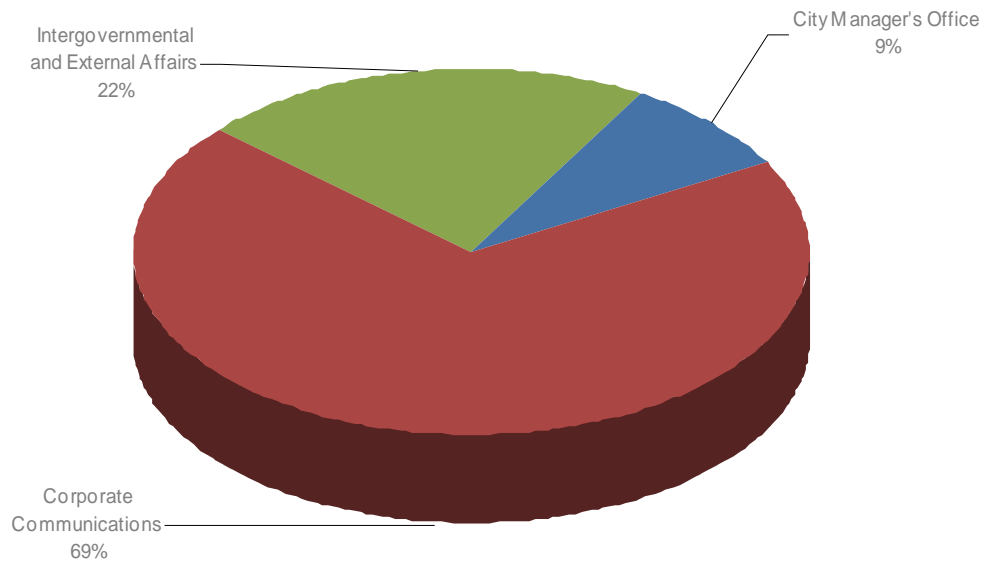
Corporate Communications	Intergovernmental and External Affairs	City Manager’s Office
Public Communications	Intergovernmental Affairs	City Manager
Internal Communications	Events/External	
City Image, Reputation and Marketing		

## Department — Office of the City Manager

### Approved 2014 Budget – Department Summary by Branch (\$000)

	2012 Actual	2013 Budget	2014 Budget	\$ Change '13-'14	% Change '13-'14
<b>Revenue &amp; Transfers</b>					
City Manager's Office	\$ -	\$ -	\$ -	\$ -	-
Corporate Communications	13	15	15	-	-
Intergov't and External Affairs	-	-	-	-	-
	-	-	-	-	-
<b>Total Revenue &amp; Transfers</b>	<b>13</b>	<b>15</b>	<b>15</b>	<b>-</b>	<b>-</b>
<b>Expenditure &amp; Transfers</b>					
City Manager's Office	1,073	1,111	1,132	21	1.9
Corporate Communications	6,739	9,378	9,040	(338)	(3.6)
Intergov't and External Affairs	1,513	2,847	2,796	(51)	(1.8)
	-	-	-	-	-
<b>Total Expenditure &amp; Transfers</b>	<b>9,325</b>	<b>13,336</b>	<b>12,968</b>	<b>(368)</b>	<b>(2.8)</b>
<b>Net Operating Requirement</b>	<b>\$ 9,312</b>	<b>\$ 13,321</b>	<b>\$ 12,953</b>	<b>\$ (368)</b>	<b>(2.8)</b>

### Expenditures by Branch



## Department — Office of the City Manager

### Approved 2014 Budget – Department Summary by Category (\$000)

	2012 Actual	2013 Budget	2014 Budget	\$ Change '13-'14	% Change '13-'14
<b>Revenue &amp; Transfers</b>					
User Fees, Fines, Permits, etc.	\$ 13	\$ 15	\$ 15	\$ -	-
Grants	-	-	-	-	-
Transfer from Reserves	-	-	-	-	-
<b>Total Revenue &amp; Transfers</b>	<b>13</b>	<b>15</b>	<b>15</b>	<b>-</b>	<b>-</b>
<b>Expenditure &amp; Transfers</b>					
Personnel	7,956	9,466	9,761	295	3.1
Materials, Goods & Supplies	194	173	167	(6)	(3.5)
External Services	1,994	4,551	4,551	-	-
Fleet Services	-	-	-	-	-
Intra-municipal Services	111	127	118	(9)	(7.1)
Utilities & Other Charges	331	389	388	(1)	(0.3)
Transfer to Reserves	-	-	-	-	-
Subtotal	10,586	14,706	14,985	279	1.9
Intra-municipal Recoveries	(1,261)	(1,370)	(2,017)	(647)	47.2
<b>Total Expenditure &amp; Transfers</b>	<b>9,325</b>	<b>13,336</b>	<b>12,968</b>	<b>(368)</b>	<b>(2.8)</b>
<b>Net Operating Requirement</b>	<b>\$ 9,312</b>	<b>\$ 13,321</b>	<b>\$ 12,953</b>	<b>\$ (368)</b>	<b>(2.8)</b>
<b>Full-time Equivalents</b>	<b>77.8</b>	<b>86.4</b>	<b>86.4</b>	<b>-</b>	

Budget details are provided at the Branch level