

Legend

Buena Vista Boundary

Laurier Park Boundary

Off-leash Boundary

Informal Pathways

Secondary Pathways

Major Looping Pathways

Shared-Use Pathway

Pathway Doglegs and Rumble Strips

Direction of Traffic Flow

Information and Wayfinding

Post and Rail Fence

Major Rest Area with Washrooms

TransCanada Pathway Kiosk

Playground Improvements

Minor Rest Area

Wooden Stairway Improvements

Cross-Country Ski Loops

Existing Parking

Potential Parking Lot

Potential Roadway Parking

Improved Picnic Accessibility

Boat Launch Improvements

Viewpoint

All Concepts

Provide boulevard trees and landscaping at entrance
Entrance lay-by (pullout) with info/wayfinding signage
Provide area for cross-county ski-loop in Laurier
Improve/update Laurier Park playgrounds
Provide additional bays of parking stalls in strategic locations
Improve accessibility at picnic sites and make some of these barrier free
Improve riverside pathway, including bank stabilization in key areas
Improve existing wood stairs at south side of site and provide information kiosk

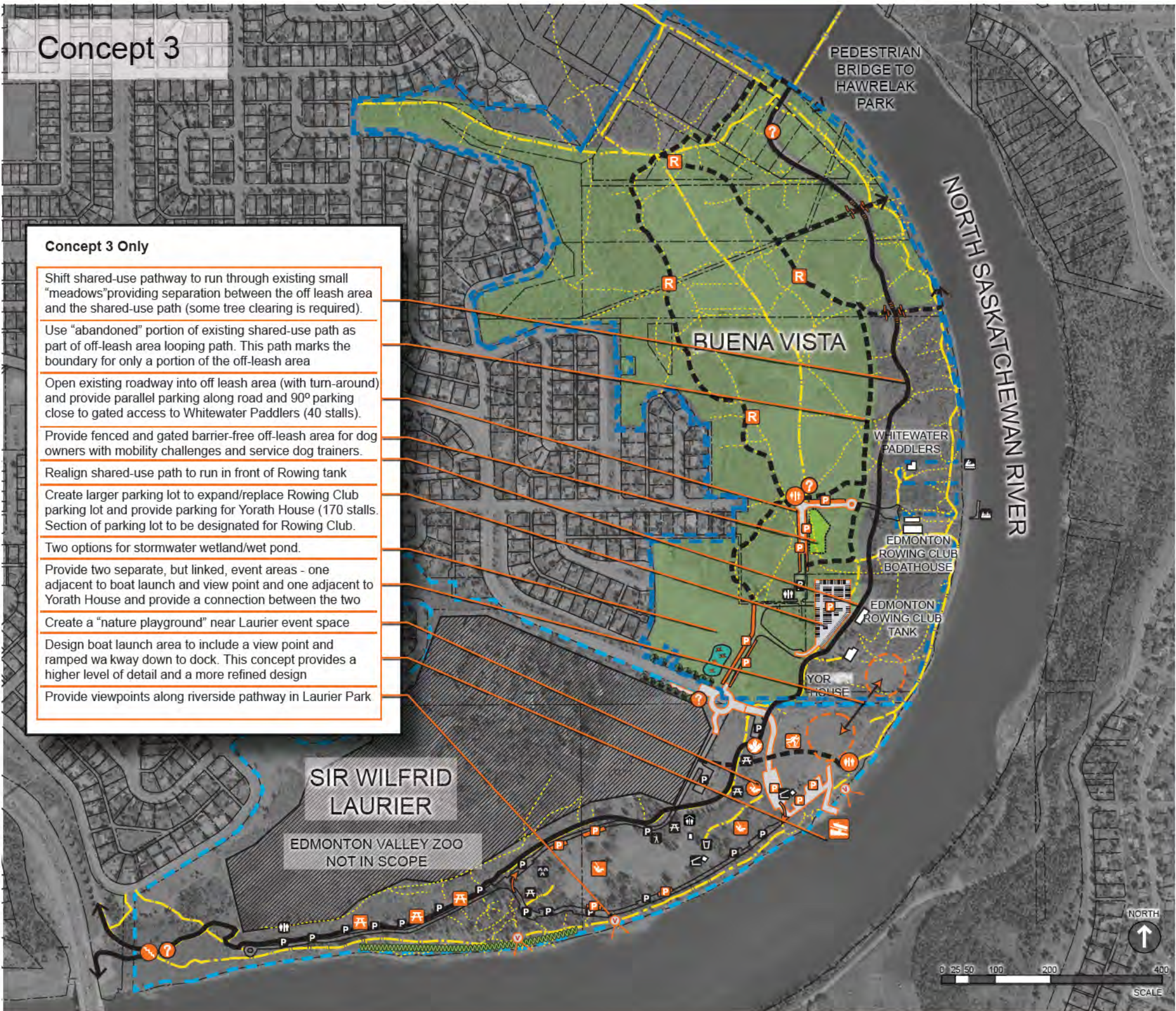
Concept 3

Concept 3 Only

- Shift shared-use pathway to run through existing small "meadows" providing separation between the off leash area and the shared-use path (some tree clearing is required).
- Use "abandoned" portion of existing shared-use path as part of off-leash area looping path. This path marks the boundary for only a portion of the off-leash area
- Open existing roadway into off leash area (with turn-around) and provide parallel parking along road and 90° parking close to gated access to Whitewater Paddlers (40 stalls).
- Provide fenced and gated barrier-free off-leash area for dog owners with mobility challenges and service dog trainers.
- Realign shared-use path to run in front of Rowing tank
- Create larger parking lot to expand/replace Rowing Club parking lot and provide parking for Yorath House (170 stalls. Section of parking lot to be designated for Rowing Club.
- Two options for stormwater wetland/wet pond.
- Provide two separate, but linked, event areas - one adjacent to boat launch and view point and one adjacent to Yorath House and provide a connection between the two
- Create a "nature playground" near Laurier event space
- Design boat launch area to include a view point and ramped wa kway down to dock. This concept provides a higher level of detail and a more refined design
- Provide viewpoints along riverside pathway in Laurier Park



Riverside View Point



All Concepts

- Create rest area (benches) and information kiosk/wayfinding node near pedestrian bridge entrance
- Provide clear pathway connections between off-leash area and shore area access near pedestrian bridge. Access locations vary by concept.
- Create a continuous 3m wide asphalt shared-use pathway through Laurier/Buena Vista - location varies by concept
- Incorporate rumble strips and "doglegs" at intersections between shared-use pathway and Buena Vista pathways
- Revisit the idea of hot-air balloon programming on site
- Provide rest areas along off-leash loop path
- Revise off-leash boundaries - varies according to concept. Shift boundary north to provide access point to shore area via pathway under pedestrian bridge (see Fig. 2 and 3)
- Provide looping pathway with hardened surface (compacted clay/sand/gravel material) - location varies by concept
- Create four-season washroom/information node near entrance to off-leash area
- Create 90° and parallel parking along 132 Street

All Concepts

- Provide area for stormwater wetland/dry pond near zoo - location varies by concept (required for stormwater).
- Provide TransCanada Trail Kiosk in prominent location
- Reverse direction of traffic on Laurier loop road
- Expand boat trailer parking near boat launch
- Provide rest area and washrooms for boaters
- Provide additional planting in Laurier to allow for succession of existing trees
- Improve boat launch to accommodate two trailers



Nature Playground