



Legend

Buena Vista Boundary

Informal Pathways

Shared-Use Pathway

Direction of Traffic Flow

Information and Wayfinding

Post and Rail Fence

Laurier Park Boundary

Secondary Pathways

Pathway Doglegs and Rumble Strips

Major Rest Area with Washrooms

TransCanada Pathway Kiosk

Playground Improvements

Off-leash Boundary

Major Looping Pathways

Potential Bank Stabilization

Minor Rest Area

Wooden Stairway Improvements

Cross-Country Ski Loops

Existing Parking

Potential Parking Lot

Potential Roadway Parking

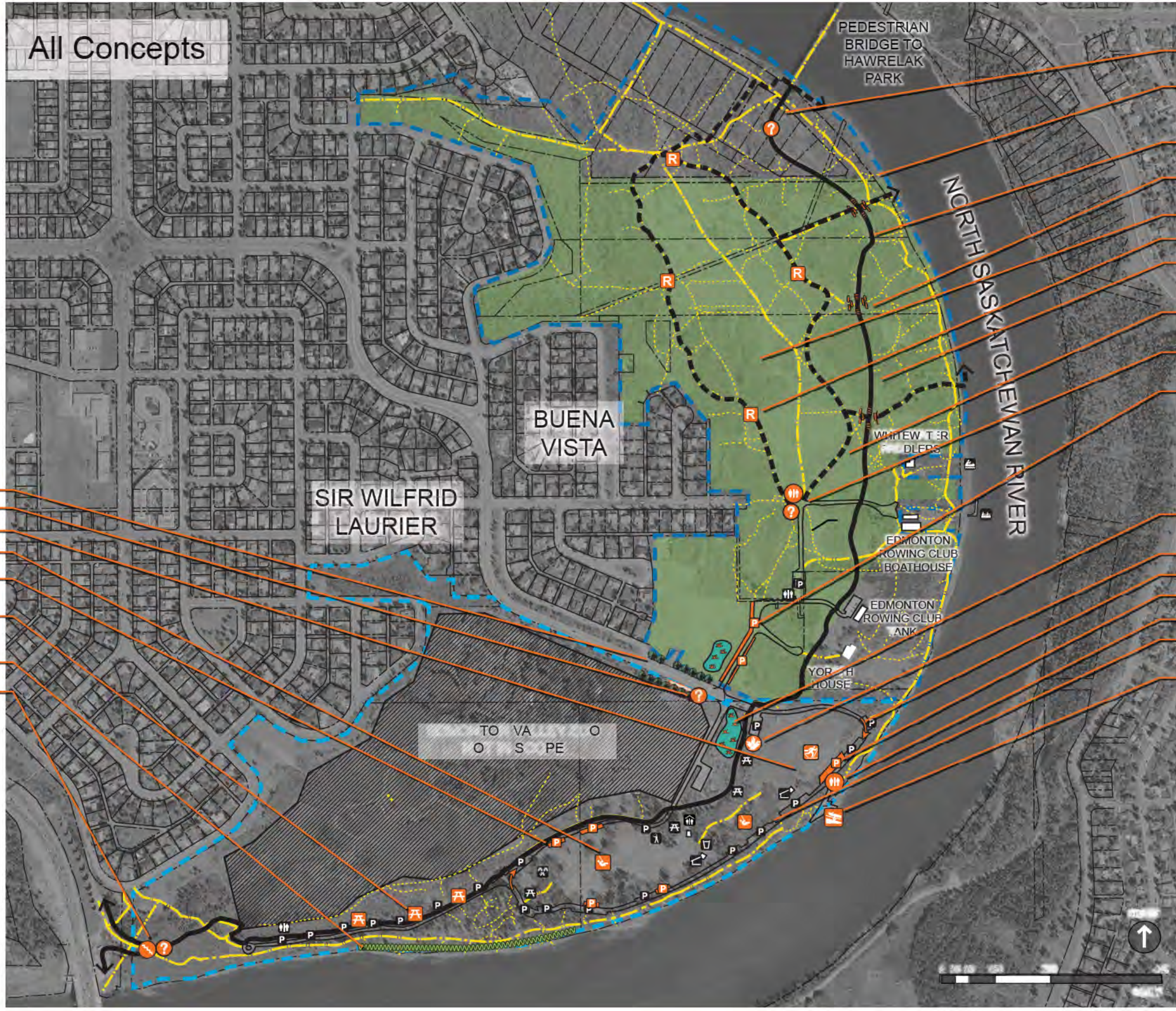
Improved Picnic Accessibility

Boat Launch Improvements

Viewpoint

All Concepts

- Provide boulevard trees and landscaping at entrance
- Entrance lay-by (pullout) with info/wayfinding signage
- Provide area for cross-county ski-loop in Laurier
- Improve/update Laurier Park playgrounds
- Provide additional bays of parking stalls in strategic locations
- Improve accessibility at picnic sites and make some of these barrier free
- Improve riverside pathway, including bank stabilization in key areas
- Improve existing wood stairs at south side of site and provide information kiosk



All Concepts

- Create rest area (benches) and information kiosk/wayfinding node near pedestrian bridge entrance
- Provide clear pathway connections between off-leash area and shore area access near pedestrian bridge. Access locations vary by concept.
- Create a continuous 3m wide asphalt shared-use pathway through Laurier/Buena Vista - location varies by concept
- Incorporate rumble strips and "doglegs" at intersections between shared-use pathway and Buena Vista pathways
- Revisit the idea of hot-air balloon programming on site
- Provide rest areas along off-leash loop path
- Revise off-leash boundaries - varies according to concept. Shift boundary north to provide access point to shore area via pathway under pedestrian bridge (see Fig. 2 and 3)
- Provide looping pathway with hardened surface (compacted clay/sand/gravel material) - location varies by concept
- Create four-season washroom/information node near entrance to off-leash area
- Create 90° and parallel parking along 132 Street

All Concepts

- Provide area for stormwater wetland/dry pond near zoo - location varies by concept (required for stormwater).
- Provide TransCanada Trail Kiosk in prominent location
- Reverse direction of traffic on Laurier loop road
- Expand boat trailer parking near boat launch
- Provide rest area and washrooms for boaters
- Provide additional planting in Laurier to allow for succession of existing trees
- Improve boat launch to accommodate two trailers