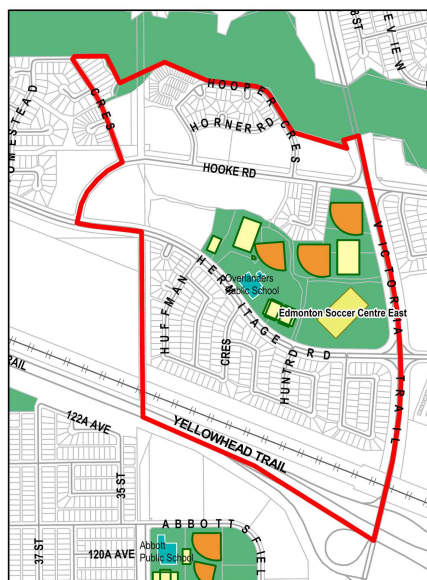
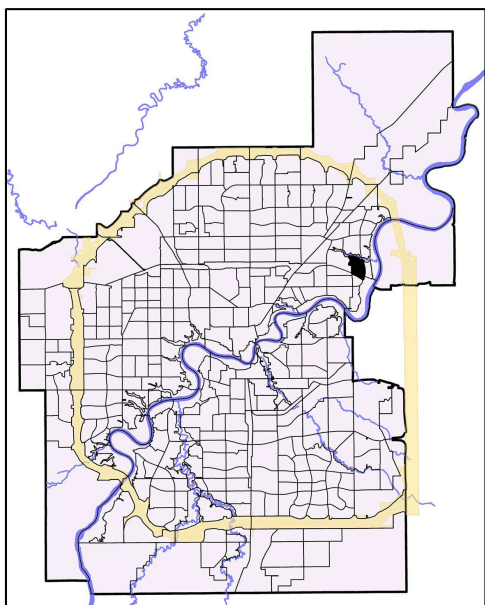


OVERLANDERS

2010 Neighbourhood Indicators



How to Read Indicators

Legend

Indicators

Social Health and Wellness	NSA	City Avg
# Child Welfare Cases	7	10.62
# of Lone Parent Families	170	149.47
# of People Who Have Moved in Past Year	795	610.70
Hospital Emergency Room Visit	483.03	351.84
Hospitalization Rate	56.54	62.86

Personal and Community Safety	NSA	City Avg
# Incidents of Property Crime	84	153.24
# Incidents of Violent Crime	11	19.13
# Offenses Committed by Juveniles	10	16.91

Education	NSA	City Avg
% of Population 20+ with Less Than Grade 9	28.30	21.55
School Transiency Rate	0.22	0.29

Housing	NSA	City Avg
# Dwellings Needing Major Repairs	55	75.57
% Dwellings which are Rented	68.70	28.29
# Households Paying > Than 30% of Income on Shelter Costs	330	313.84

Economic/Employment	NSA	City Avg
# Households with Low Income	95	103.50
% Unemployed (25+)	3.24	2.69
# of Hamper Users	103	135.08
# SFI Recipients - (#)		86.80

Physical and Natural Environment	NSA	City Avg
Condition of Playgrounds	3.00	2.70
Condition of Sidewalks and Roadways	13.80	13.65

Demographics

	NSA	City Avg
Population 2009	2,859	782,439
Median Household Income*	56,334	57,085
Average House Assessment 2010	308,832	360,723
Average Rent Cost*	815	761

Note:

NSA - Neighbourhood Statistical Area

City Average (City Avg) is based on participating neighbourhoods used in the study.

Missing value indicates the absence of data available for the study.

* Base on 2006 Census