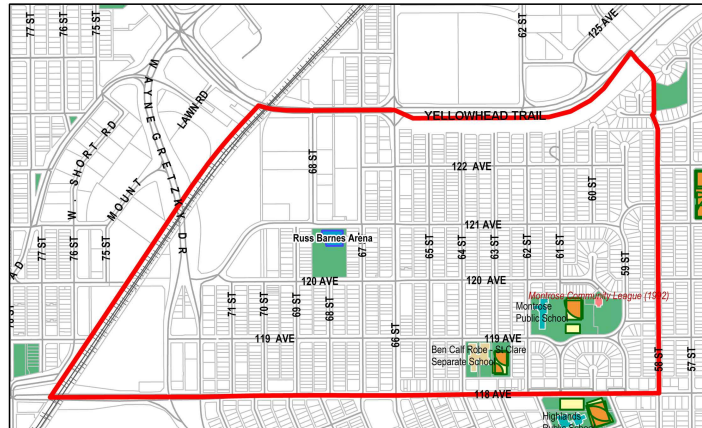
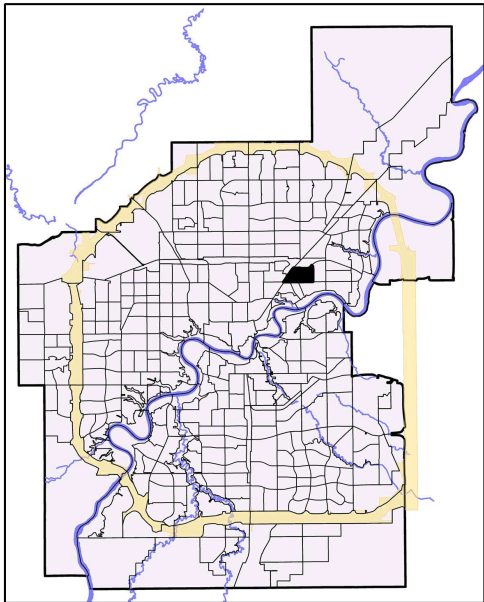


MONTROSE

2010 Neighbourhood Indicators



[How to Read Indicators](#)

[Legend](#)

Indicators

Social Health and Wellness	NSA	City Avg
# Child Welfare Cases	12	10.62
# of Lone Parent Families	235	149.47
# of People Who Have Moved in Past Year	610	610.70
Hospital Emergency Room Visit	506.22	351.84
Hospitalization Rate	86.32	62.86

Personal and Community Safety	NSA	City Avg
# Incidents of Property Crime	403	153.24
# Incidents of Violent Crime	67	19.13
# Offenses Committed by Juveniles	46	16.91

Education	NSA	City Avg
% of Population 20+ with Less Than Grade 9	32.67	21.55
School Transiency Rate	0.61	0.29

Housing	NSA	City Avg
# Dwellings Needing Major Repairs	170	75.57
% Dwellings which are Rented	40.86	28.29
# Households Paying > Than 30% of Income on Shelter Costs	405	313.84

Economic/Employment	NSA	City Avg
# Households with Low Income	155	103.50
% Unemployed (25+)	1.16	2.69
# of Hamper Users	286	135.08
# SFI Recipients - (#)	105	86.80

Physical and Natural Environment	NSA	City Avg
Condition of Playgrounds	3.00	2.70
Condition of Sidewalks and Roadways	11.20	13.65

Demographics	NSA	City Avg
Population 2009	3,153	782,439
Median Household Income*	42,740	57,085
Average House Assessment 2010	211,906	360,723
Average Rent Cost*	675	761

Note:
 NSA - Neighbourhood Statistical Area
 City Average (City Avg) is based on participating neighbourhoods used in the study.
 Missing value indicates the absence of data available for the study.
 * Base on 2006 Census