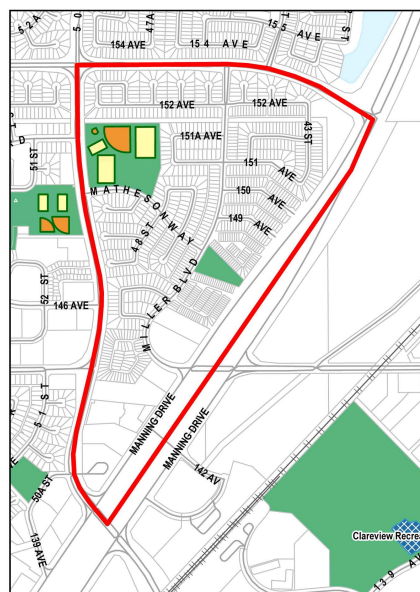
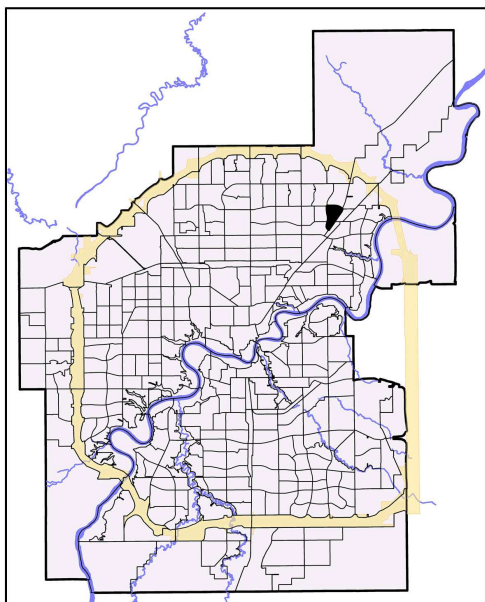


2010 Neighbourhood Indicators



How to Read Indicators

Legend

Indicators

Social Health and Wellness	NSA	City Avg
# Child Welfare Cases	3	10.62
# of Lone Parent Families	80	149.47
# of People Who Have Moved in Past Year	490	610.70
Hospital Emergency Room Visit	584.60	351.84
Hospitalization Rate	68.61	62.86

Personal and Community Safety	NSA	City Avg
# Incidents of Property Crime	67	153.24
# Incidents of Violent Crime	13	19.13
# Offenses Committed by Juveniles	4	16.91

Education	NSA	City Avg
% of Population 20+ with Less Than Grade 9	20.04	21.55
School Transiency Rate		0.29

Housing	NSA	City Avg
# Dwellings Needing Major Repairs	0	75.57
% Dwellings which are Rented	15.94	28.29
# Households Paying > Than 30% of Income on Shelter Costs	185	313.84

Economic/Employment	NSA	City Avg
# Households with Low Income	65	103.50
% Unemployed (25+)	2.12	2.69
# of Hamper Users	7	135.08
# SFI Recipients - (#)		86.80

Physical and Natural Environment	NSA	City Avg
Condition of Playgrounds		2.70
Condition of Sidewalks and Roadways	18.20	13.65

Demographics		
	NSA	City Avg
Population 2009	2,841	782,439
Median Household Income*	73,544	57,085
Average House Assessment 2010	350,683	360,723
Average Rent Cost*	1,006	761

Note:
 NSA - Neighbourhood Statistical Area
 City Average (City Avg) is based on participating neighbourhoods used in the study.
 Missing value indicates the absence of data available for the study.
 * Base on 2006 Census