



East End Trails

Public Engagement Progress Report*

2014

*Please note: Some sections of this report have been updated with new details about the project. As such, it differs slightly from the materials presented during previous public engagement activities.

Table of Contents

BACKGROUND..... 1

 River Valley Alliance 1

 River Valley Connections 1

 East End Trails..... 2

Public Engagement..... 3

Summary of Feedback..... 4

Meeting with Community Leagues Representatives 4

Meeting with Property Owners along Fraser Ravine 5

Conclusion..... 7

Appendix A

Community Open House Materials

Appendix B

Communication Materials

Appendix C

Comment Form

Appendix D

Comment Form Responses

BACKGROUND

Covering an area of more than 18,000 acres, the Capital Region River Valley Park is North America's largest urban park. The park system connects over 88 kilometres of the North Saskatchewan River valley from Devon to Fort Saskatchewan.

The City of Edmonton has partnered with the River Valley Alliance (RVA) on *River Valley Connections*, which is the next significant step in creating a world-class, connected river valley park. Once complete, the project will increase access to and connectivity throughout the river valley park system.

River Valley Alliance

The River Valley Alliance (RVA) is a non-profit group formed by the seven Capital Region municipalities bordering the North Saskatchewan River. Their mission is to protect, preserve and enhance the river valley — to create one of the largest river valley parks in the world, and to create a legacy for generations to come.

A 16-member board of directors governs the RVA with representatives from each member municipality. Its three primary goals are:

- To coordinate river valley planning and development within the seven member municipalities
- Ensure plans respond to and balance the social, recreational, environmental, and economic needs of Capital Region residents
- Raise funds to bring these plans to reality

In 2012, the RVA announced \$90 million in capital funding for 18 Capital Region projects to improve public access to, and connectivity within, the regional river valley. \$24.3 million has been allocated by the RVA for projects within Edmonton.

The \$24.3 million provided to the City of Edmonton by the RVA was matched by the Government of Canada (which provided \$24.3 million) and the Government of Alberta (which provided \$22.6 million). The City of Edmonton contributed \$1.2 million from general finances and \$0.4 million from its parkland reserve.

River Valley Connections

In total, \$72.9 million in funding has been allocated towards 12 river valley projects, which are grouped into five initiatives. The five initiatives are:

1. Terwillegar Park Footbridge: This 262-metre long footbridge will link Terwillegar Park to the river terrace north of the river.

2. West End Trails: This initiative will add approximately five kilometres of primary (paved) and secondary (gravel) trails to the river valley main spine trail. The extensions include a link between the recently completed signature Fort Edmonton Footbridge and a new footbridge to Terwillegar Park.

3. East End Trails: This initiative will develop approximately 16 km of trails in east Edmonton.

4. Boat Docks and Launches: Three boat launches and seven docks will be added or refurbished throughout the river valley for public use.

5. Mechanized River Valley Access and Touch the Water Promenade: The waterfront promenade project will serve to develop the area next to the old EPCOR power station and the new Waltherdale Bridge. The promenade may include amenities such as plazas, walkways and docks. The mechanized river access project will connect the downtown to the river valley trail system. The method of access has yet to be determined by City Council. Together, these initiatives are the next significant step towards creating a connected, world-class river valley system within the City of Edmonton.

East End Trails

The East End Trails will add nearly 16 kilometres of trails to the river valley area in east Edmonton. This project will extend the existing river valley trail system, provide connections with new and existing neighbourhoods and tie into a new pedestrian river crossing at Anthony Henday Drive.

Proposed East Trails Route

This expansion will see trails constructed along the following proposed route:

North of River

- A paved (primary) trail from Hermitage Park along the north river bank to the south end of 17 Street NE. A trail route designation up 17 Street NE to the Quarry Golf Course.
- A gravel (secondary) trail running north from the Quarry Golf Course to the east end of 167 Ave.

River Crossing

- A pedestrian link across the Anthony Henday Bridge being constructed by the Government of Alberta.

South of River

- A gravel (secondary) trail east and west of the Anthony Henday Bridge

Tiger Goldstick Park Trail

As a separate project within the East End Trails initiative, 980 metres of secondary trails are being upgraded in Tiger Goldstick Park. A separate report will summarize the public engagement activities conducted for this trail.

Public Engagement

As part of its commitment to public engagement, the City of Edmonton met with community league representatives, potentially impacted property owners whose properties are adjacent to the trail route, and held a community open house during the winter of 2014. The details of these events are as follows:

Meeting With Community Leagues Representatives – February 5, 2013

Location: Bethel Christian Reformed Church, 14204-25 St NW
Time: 6:30 – 8:00 p.m.
Attendees 8 participants (10 invitees)

A meeting was held with area community league representatives at the Bethel Christian Reformed Church. Invitations were sent to community leagues identified in conjunction with the City's Community Recreation Coordinator for the area.

During the meeting, City of Edmonton staff and members of the engineering and design team at EDA Collaborative (the design consultant hired to oversee the project) delivered a presentation that provided an overview of the initiative. Participants posed questions to the project team and provided input on the number, location, and level of development of the trail's proposed viewpoints. Participant comments were recorded during the meeting.

Meeting With Property Owners Along Fraser Ravine – February 6, 2013

Location: Bethel Christian Reformed Church, 14204-25 St NW
Time: 6:30 – 8:00 p.m.
Attendees 8 participants (75 invitees)

A second meeting was held at the Bethel Christian Reformed Church with property owners whose properties back onto the Fraser Ravine. Letters of invitation were mailed to 75 property owners along the ravine, following which reminder postcards were hand delivered to each home.

During the meeting, City of Edmonton staff and members of the design team at EDA Collaborative delivered a presentation that provided an overview of the initiative. Participants provided input on the distance of the trail from their property's fence line, as well as their preferences for the height and location of tree and shrub planting between properties and the trail. Participant comments were recorded during the meeting.

Open House – March 1, 2014

Location: South Clareview Hall, 3250-132A Ave NW

Time: 10:00 a.m. – 3:00 p.m.

Attendance: 48 people

On March 1, 2014, 48 Edmontonians attended a public open house at the South Clareview Hall. The event was advertised through a direct mail campaign that reached 7200 area homes, roadside signage, print advertisements in the *Edmonton Journal*, *Edmonton Sun*, and *Edmonton Examiner*, and through local community leagues.

Participants viewed display boards of the trail route, viewpoint locations, and potential viewpoint amenities. They had opportunities to ask questions and discuss the trail with members of the project design team and City of Edmonton staff and provide feedback through comment forms.

Summary of Feedback

Meeting with Community League Representatives

The City of Edmonton provided community league representatives with background information on the *River Valley Connections* project and a short overview of each of its initiatives. The design team then presented on the specific details of the East End Trails, including its purpose, the existing conditions of the proposed trail site, and the project's budget and timelines.

After this presentation, participants were given the opportunity to ask questions and provide input. The design team engaged them in a discussion about the number and location of viewpoints along the trail, as well as their level of development. Below is a summary of the opinions, issues and suggestions raised by the participants:

Viewpoints (Location and Level of Development)

Generally, participants felt viewpoints should be relatively basic, with most people expressing preference for concrete or metal benches. They believe these options would be the least intrusive and most resistant to weathering and vandalism. A few participants indicated more elaborate viewpoints could be constructed at either end of the trail allowing for a destination point for trail users.

Trail Accessibility

Participants asked several questions about the trail's accessibility, including the level of trail slope planned. Although the trail design has not been finalized, participants were assured it would meet City of Edmonton Trail standards, as the ultimate goal of the initiative is to increase accessibility. The design team was also asked about access points to and from the trail for both users and emergency vehicles. The team noted the proposed route is generally quite accessible as it is adjacent to a large number of public roads. As well, its planned width of three metres is wide enough to accommodate emergency vehicle access.

Dog Off-Leash Area

Some participants expressed safety concerns about bicycling near the Hermitage Park dog off-leash area. They said they would not support creating additional off-leash areas adjacent to the East End Trails.

The meeting concluded with Councillor Gibbons providing background information on the City's future plans to expand the trail system and what work was occurring with neighboring municipalities.

Participants were also invited to attend the March 1, 2014 public open house.

Meeting with Property Owners Along Fraser Ravine

The presentation to property owners along Fraser Ravine followed a similar format to the meeting with area community league representatives: The City of Edmonton provided background information on the *River Valley Connections* project and a short overview of each of its initiatives. The design team then presented on the specific details of the East End Trails, including its purpose, the existing conditions of the proposed trail site, and the project's budget and timelines.

After this presentation, participants were given the opportunity to ask questions and provide their input.

The design team engaged them in a discussion to receive input on:

- Modifying the trail alignment where possible to create more space between the back of property owners' lots and the trail
- Adding more planting or larger trees between the back of properties and the trail to improve privacy

Below is a summary of the opinions, issues and suggestions raised by participants:

Modifying Alignment and Planting Height

Property owners would prefer to move the proposed alignment where possible to create a greater barrier between their lots and the trail. They also agree that planting to help protect privacy is important.

However, they do not want current views of the river valley to be impeded by trees or shrubs. Ultimately, residents expressed a preference for fence-height bushes or shrubs.

Several participants asked about the maintenance of the shrubs after expressing concerns they could grow through fences and intrude on their properties. The design team said a native shrub species would be chosen with a goal to ensure its maximum height would not exceed the community's preference.

Viewpoints (Location and Level of Development)

Participants in the meeting expressed a preference for basic viewpoints. They noted that much of the infrastructure in the area is vulnerable to vandalism and that viewpoints should be constructed with this in mind.

Attendees suggested a small number of viewpoints could be upgraded to a more elaborate structure. They expressed particular interest in seeing a more developed viewpoint constructed on the east corner of the ravine due to the spectacular view the location offers. Another location identified as a potential site for an upgraded viewpoint was the site adjacent to Anthony Henday Drive on the north bank of the river. Some residents also asked about the possibility of building washrooms at different points along the trails. City staff noted there are challenges with building washrooms, especially along more remote trails and the City is currently focused on placing restroom facilities in large, developed parks rather than the trail system. Several people also suggested that it would be beneficial to have garbage receptacles placed alongside the benches.

Community Open House

Edmontonians were invited to participate in a community open house on the East End Trails initiative on March 1, 2014. Forty-eight Edmontonians attended. Participants were able to review display boards and informational handouts on the project, as well as talk with the trail design team and City of Edmonton staff. The engagement team asked attendees to provide input on the trails by filling in comment forms. A summary of the major themes from the feedback received on these forms is below. The verbatim responses are included in Appendix D of this document.

General Awareness

The reception to the East End Trails at the public open house was almost wholly positive and the design team heard many comments that were supportive of the initiative. Many area residents were pleased the City has targeted this area of Edmonton for development, and were looking forward to enjoying the trails once they are complete. When asked about their general familiarity with the East End Trails and their level of satisfaction with the initiative, people responded very positively. A majority of participants indicated they were very supportive of the initiative.

Viewpoints

Nearly all participants were happy with the number and location of the proposed viewpoints, with only a small handful indicating they would prefer fewer viewpoints. Feedback was almost evenly split between a preference for upgraded viewpoints and simple viewpoints. Some people felt that simple viewpoints would be less likely to be vandalized and be more cost efficient. However, others felt that sheltered viewpoints would provide useful refuge from the rain, snow and sun. Some participants suggested that a mix of simple viewpoints and sheltered viewpoints could be built. Several comments asked the City to provide garbage receptacles along the trail and to empty them on a regular basis.

Bylaw Enforcement

A number of participants requested more enforcement of City bylaws on the trails. They expressed concerns about current and potential unlawful activity in the area, including the use of off-road vehicles and snowmobiles, vandalism, and loitering.

Conclusion

In general Edmontonians support the East End Trails and the comments received to date by the project team have been almost wholly positive. Area residents are looking forward to the increased connectivity within the river valley park and increased accessibility to the river valley the upgrade will provide to people of many abilities. As well, they want to see the viewpoints constructed from durable materials in order to deter vandalism.

The input received during these engagements will inform the final trail designs, which are anticipated to be complete in Fall 2014. Once finalized, another community open house will be held to present the final trail designs to the community before the commencement of construction. More information on the status of this initiative and the other *River Valley Connections* projects can be found at www.edmonton.ca/rivervalleyprojects.

All inquiries related to the East End Trails can be directed to Rob Marchak at rob.marchak@edmonton.ca or by phone at (780) 442-1377.



HERE'S YOUR CHANCE
TO MAKE A RIVER
VALLEY CONNECTION

Join us for a discussion on the East End Trails

OPEN HOUSE (DROP-IN)

Saturday, March 1, 2014, 10a.m. - 3p.m.

South Clareview Hall - 3250-132 A Ave NW, Edmonton

In support of the
River Valley Alliance Initiatives.
Edmonton.ca/rivervalleyprojects



HERE'S YOUR CHANCE TO MAKE A RIVER VALLEY CONNECTION



Join us for a discussion on the East End Trails

OPEN HOUSE (DROP-IN)

Saturday, March 1, 2014, 10a.m. - 3p.m.

South Clareview Hall - 3250-132 A Ave NW, Edmonton

In support of the River Valley Alliance Initiatives.
Edmonton.ca/rivervalleyprojects





HERE'S YOUR CHANCE TO MAKE A RIVER VALLEY CONNECTION

Join us for a discussion on the East End Trails

OPEN HOUSE (DROP-IN)

Saturday, March 1, 2014, 10a.m. - 3p.m.

South Clareview Hall - 3250-132 A Ave NW, Edmonton

In support of the River Valley Alliance Initiatives.

Edmonton.ca/rivervalleyprojects





HERE'S YOUR CHANCE TO MAKE A RIVER VALLEY CONNECTION

Join us for a discussion on the East End Trails

OPEN HOUSE (DROP-IN)

Saturday, March 1, 2014, 10a.m. - 3p.m.

South Clareview Hall - 3250-132 A Ave NW, Edmonton

In support of the River Valley Alliance Initiatives.

Edmonton.ca/rivervalleyprojects





HERE'S YOUR CHANCE
TO MAKE A RIVER
VALLEY CONNECTION

Join us for a discussion on the East End Trails

OPEN HOUSE (DROP-IN)

Saturday, March 1, 2014 | 10a.m. - 3p.m.

South Clareview Hall: 3250-132 A Ave NW, Edmonton



PROJECT BACKGROUND

As one of the five River Valley Connections initiatives, the East End Trails will add or refurbish approximately 16 km of trails to river valley parks in east Edmonton. The purpose of this project is to extend the existing river valley trail system, provide connections with new and existing neighbourhoods and tie into a new pedestrian river crossing at Anthony Henday Drive.

GET INVOLVED!

As part of its commitment to public engagement, the City of Edmonton is hosting a drop-in open house to share information about the project.

For more information on River Valley Connections or the East End Trails, please visit www.edmonton.ca/rivervalleyprojects

IN SUPPORT OF THE RIVER VALLEY ALLIANCE INITIATIVES



Services for deaf or hard of hearing persons provided upon request. Call 311 at TTY/NexTalk 780-944-5555 and press 0, or email 311@edmonton.ca. Learn more about and get involved in City issues affecting you and your neighbourhood. Go to www.edmonton.ca/PublicInvolvementCalendar for a list of public involvement opportunities.





HERE'S YOUR CHANCE
TO MAKE A RIVER
VALLEY CONNECTION

Join us for a discussion on the East End Trails

OPEN HOUSE (DROP-IN)

Saturday, March 1, 2014 | 10a.m. - 3p.m.
South Clareview Hall: 3250-132 A Ave NW, Edmonton



PROJECT BACKGROUND

As one of the five River Valley Connections initiatives, the East End Trails will add or refurbish approximately 16 km of trails to river valley parks in east Edmonton. The purpose of this project is to extend the existing river valley trail system, provide connections with new and existing neighbourhoods and tie into a new pedestrian river crossing at Anthony Henday Drive.

GET INVOLVED!

As part of its commitment to public engagement, the City of Edmonton is hosting a drop-in open house to share information about the project.

For more information on River Valley Connections or the East End Trails, please visit
www.edmonton.ca/rivervalleyprojects

IN SUPPORT OF THE RIVER VALLEY ALLIANCE INITIATIVES



Services for deaf or hard of hearing persons provided upon request. Call 311 at TTY/NexTalk 780-944-5555 and press 0, or email 311@edmonton.ca. Learn more about and get involved in City issues affecting you and your neighbourhood. Go to www.edmonton.ca/PublicInvolvementCalendar for a list of public involvement opportunities.





HERE'S YOUR CHANCE TO MAKE
A RIVER VALLEY CONNECTION

Join us for a discussion on the East End Trails

OPEN HOUSE

Saturday, March 1, 2014, 10a.m. - 3p.m.
South Clareview Hall - 3250-132 A Ave NW, Edmonton



HERE'S YOUR CHANCE TO MAKE
A RIVER VALLEY CONNECTION

Join us for a discussion on the East End Trails

OPEN HOUSE

Saturday, March 1, 2014, 10a.m. - 3p.m.
South Clareview Hall - 3250-132 A Ave NW, Edmonton



PROJECT BACKGROUND

As one of the five River Valley Connections initiatives, the East End Trails will add or refurbish approximately 16 km of trails to river valley parks in east Edmonton. The purpose of this project is to extend the existing river valley trail system, provide connections with new and existing neighbourhoods and tie into a new pedestrian river crossing at Anthony Henday Drive.

GET INVOLVED!

As part of its commitment to public engagement, the City of Edmonton and project consulting team is hosting a drop-in open house to share information about the project.

For more information on River Valley Connections or the East End Trails, please visit www.edmonton.ca/rivervalleyprojects

OPEN HOUSE

Saturday, March 1, 2014
10a.m. - 3p.m.
South Clareview Hall
13250-132 A Ave NW, Edmonton

Strategy

Concept

Where we are today
DESIGN
PHASE

Build

Operate

PROPOSED EAST END TRAILS ROUTE



Services for deaf or hard of hearing persons provided upon request. Call 311 at TTY/NexTalk 780-944-5555 and press 0, or email 311@edmonton.ca. Learn more about and get involved in City issues affecting you and your neighbourhood. Go to www.edmonton.ca/PublicInvolvementCalendar for a list of public involvement opportunities.

PROJECT BACKGROUND

As one of the five River Valley Connections initiatives, the East End Trails will add or refurbish approximately 16 km of trails to river valley parks in east Edmonton. The purpose of this project is to extend the existing river valley trail system, provide connections with new and existing neighbourhoods and tie into a new pedestrian river crossing at Anthony Henday Drive.

GET INVOLVED!

As part of its commitment to public engagement, the City of Edmonton and project consulting team is hosting a drop-in open house to share information about the project.

For more information on River Valley Connections or the East End Trails, please visit www.edmonton.ca/rivervalleyprojects

OPEN HOUSE

Saturday, March 1, 2014
10a.m. - 3p.m.
South Clareview Hall
13250-132 A Ave NW, Edmonton

Strategy

Concept

Where we are today
DESIGN
PHASE

Build

Operate

PROPOSED EAST END TRAILS ROUTE



Services for deaf or hard of hearing persons provided upon request. Call 311 at TTY/NexTalk 780-944-5555 and press 0, or email 311@edmonton.ca. Learn more about and get involved in City issues affecting you and your neighbourhood. Go to www.edmonton.ca/PublicInvolvementCalendar for a list of public involvement opportunities.



PROJECT BACKGROUND

As one of the five River Valley Connections initiatives, the East End Trails will add or refurbish approximately 16 kilometres of trails to river valley parks in east Edmonton. This project is funded in partnership with the Provincial and Federal governments, and the River Valley Alliance.

EAST END TRAILS

Fifteen kilometres of primary and secondary trails are being developed in east Edmonton to connect the river valley main spine trail with new communities. This expansion will see two trails constructed along the following proposed alignment:

North of River

- A primary asphalt trail from Hermitage Park along the north river bank to the south end of 17 Street NE.
- A trail route designation up 17 Street NE to the Quarry Golf Course.
- A secondary granular trail running north from the Quarry Golf Course to the east end of 167 Ave.

River Crossing

- A pedestrian link across the Anthony Henday Bridge being constructed by the Province of Alberta.

South of River

- A secondary granular trail east and west of the Anthony Henday Bridge.

A map of the proposed trail route can be found on the back of this card.

A further 980 metres of secondary trails are being upgraded in Tiger Goldstick Park.



PROJECT BACKGROUND

As one of the five River Valley Connections initiatives, the East End Trails will add or refurbish approximately 16 kilometres of trails to river valley parks in east Edmonton. This project is funded in partnership with the Provincial and Federal governments, and the River Valley Alliance.

EAST END TRAILS

Fifteen kilometres of primary and secondary trails are being developed in east Edmonton to connect the river valley main spine trail with new communities. This expansion will see two trails constructed along the following proposed alignment:

North of River

- A primary asphalt trail from Hermitage Park along the north river bank to the south end of 17 Street NE.
- A trail route designation up 17 Street NE to the Quarry Golf Course.
- A secondary granular trail running north from the Quarry Golf Course to the east end of 167 Ave.

River Crossing

- A pedestrian link across the Anthony Henday Bridge being constructed by the Province of Alberta.

South of River

- A secondary granular trail east and west of the Anthony Henday Bridge.

A map of the proposed trail route can be found on the back of this card.

A further 980 metres of secondary trails are being upgraded in Tiger Goldstick Park.

Strategy

Concept

Where we are today
DESIGN
PHASE

Build

Operate

PROPOSED ROUTE OF THE EAST END TRAILS



More information can be found at
www.edmonton.ca/rivervalleyprojects

You can also contact:

Rob Marchak

Director, Strategic Projects Section

Urban Planning and Environment

Ph: (780) 442-1377 | Email: rob.marchak@edmonton.ca

Strategy

Concept

Where we are today
DESIGN
PHASE

Build

Operate

PROPOSED ROUTE OF THE EAST END TRAILS



More information can be found at
www.edmonton.ca/rivervalleyprojects

You can also contact:

Rob Marchak

Director, Strategic Projects Section

Urban Planning and Environment

Ph: (780) 442-1377 | Email: rob.marchak@edmonton.ca



Dear Homeowner,

As part of River Valley Connections, the City of Edmonton's East End Trails initiative will add or refurbish approximately 16 km of trails along the river valley in east Edmonton. You are being contacted early in the design phase of this project because your property backs onto the existing trail route beside the Fraser Ravine.

A letter was mailed to you earlier this week to inform you about an upcoming meeting in your community. We hope to see you at 6:30 pm on February 6 at the Bethel Community Church for a presentation on the project.

EAST END TRAILS STAKEHOLDER MEETING

Thursday, Feb. 6, 2014
6:30-8pm

Bethel Community Church
(lower level)
14204-25 Street NW

Please RSVP to
vasenova@calderbateman.com



For more information on River Valley Connections or the East End Trails, please visit www.edmonton.ca/rivervalleyprojects

Dear Homeowner,

As part of River Valley Connections, the City of Edmonton's East End Trails initiative will add or refurbish approximately 16 km of trails along the river valley in east Edmonton. You are being contacted early in the design phase of this project because your property backs onto the existing trail route beside the Fraser Ravine.

A letter was mailed to you earlier this week to inform you about an upcoming meeting in your community. We hope to see you at 6:30 pm on February 6 at the Bethel Community Church for a presentation on the project.

EAST END TRAILS STAKEHOLDER MEETING

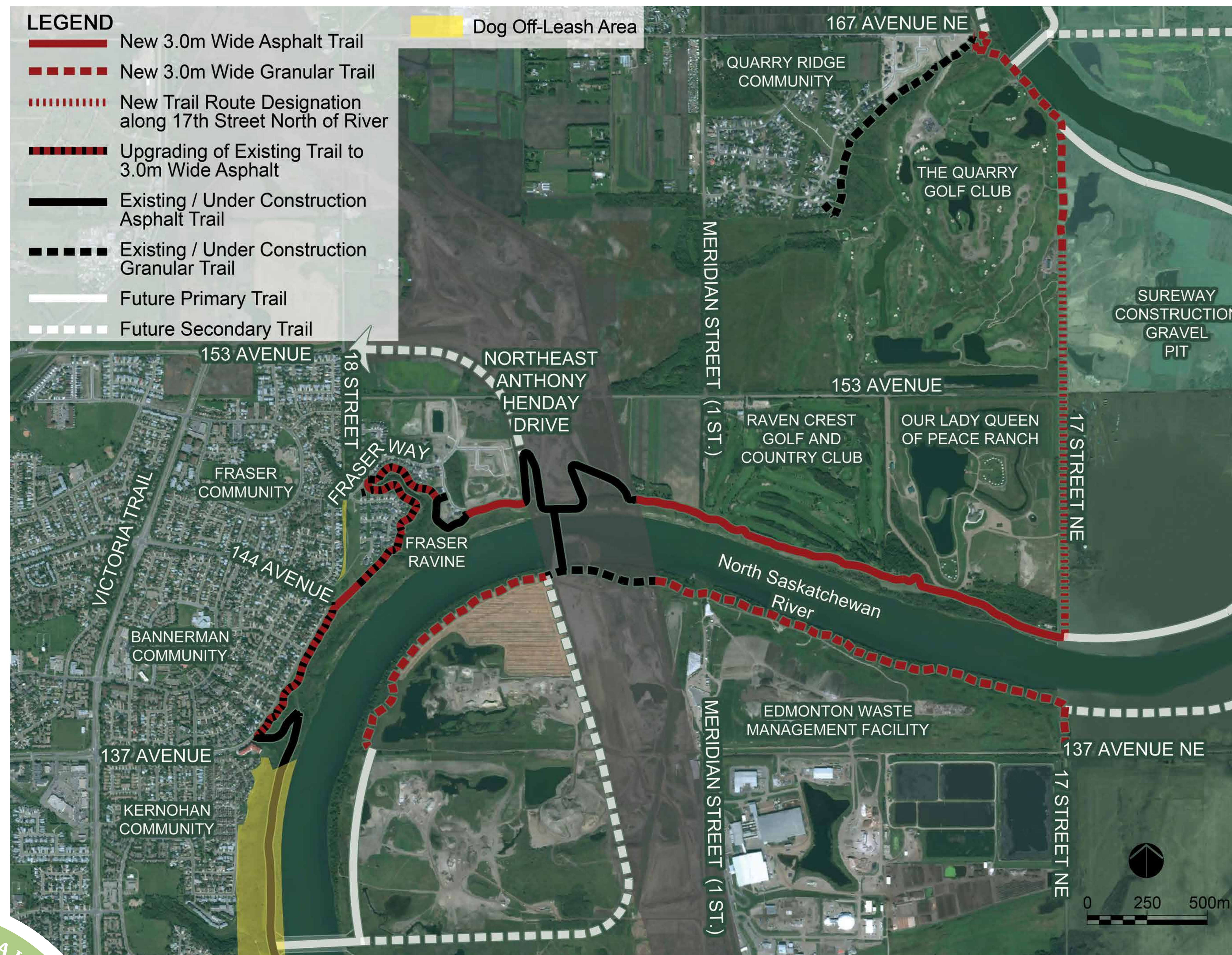
Thursday, Feb. 6, 2014
6:30-8pm

Bethel Community Church
(lower level)
14204-25 Street NW

Please RSVP to
vasenova@calderbateman.com

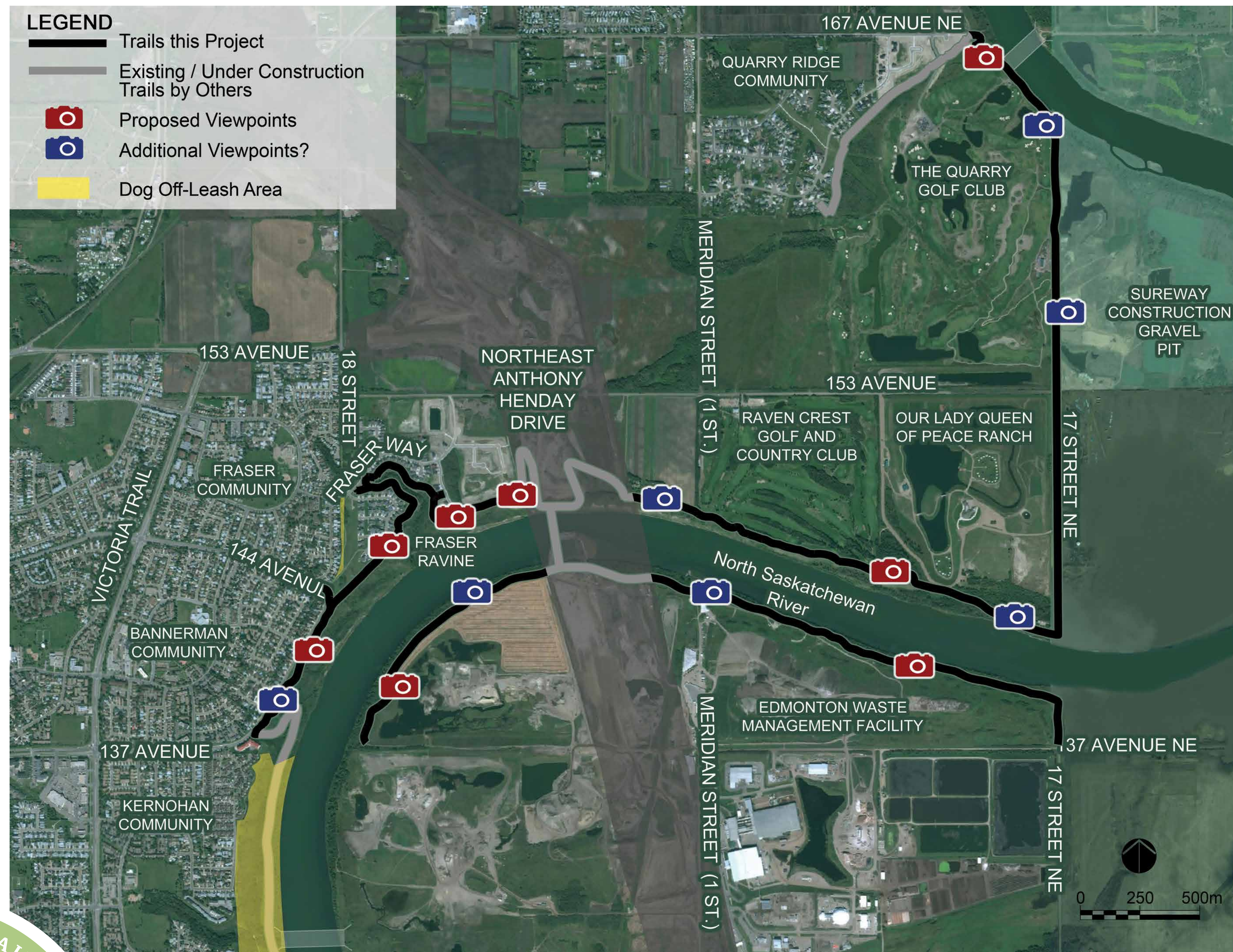


For more information on River Valley Connections or the East End Trails, please visit www.edmonton.ca/rivervalleyprojects



EAST END TRAILS MAP





VIEWPOINTS

EDMONTON'S RIVER VALLEY CONNECTIONS

- Supports Edmonton's Ribbon of Green Master Plan and River Valley Alliance vision
- Enhances access to river valley and connectivity through river valley trail system
- Next significant step in creating world-class regional river valley park

TWELVE PROJECTS GROUPED INTO FIVE INITIATIVES IN EDMONTON:

- Terwillegar Park Footbridge
- West End Trails
- East End Trails
- Boat Docks and Launches
- 104 Street River Valley Access and Touch the Water Promenade

FUNDING

Total budget: \$72.9 M

- Funded through grants from the:
 - River Valley Alliance: \$24.3 M
 - Government of Alberta: \$22.6 M
 - Government of Canada: \$24.3 M
- City of Edmonton contribution: \$1.6 M
 - \$1.2 M from general finances
 - \$0.4 M from parkland reserve



EDMONTON'S RIVER VALLEY CONNECTIONS INITIATIVES

The five initiatives consist of 12 individual projects:

TERWILLEGAR PARK FOOTBRIDGE

- A 262-metre long stressed ribbon concept footbridge to link Terwillegar Park to north river terrace (River Valley Oleskiw)

WEST END TRAILS

- Approximately five km of new paved and gravel trails along the river valley main spine trail in Terwillegar Park to link the Terwillegar Footbridge to the existing trail system north and south of the river

EAST END TRAILS (2 PROJECTS)

- 16 km of new and upgraded primary (paved) and secondary (gravel) river valley trails in east Edmonton, including the upgrade of 980 meters of gravel trails in Tiger Goldstick Park

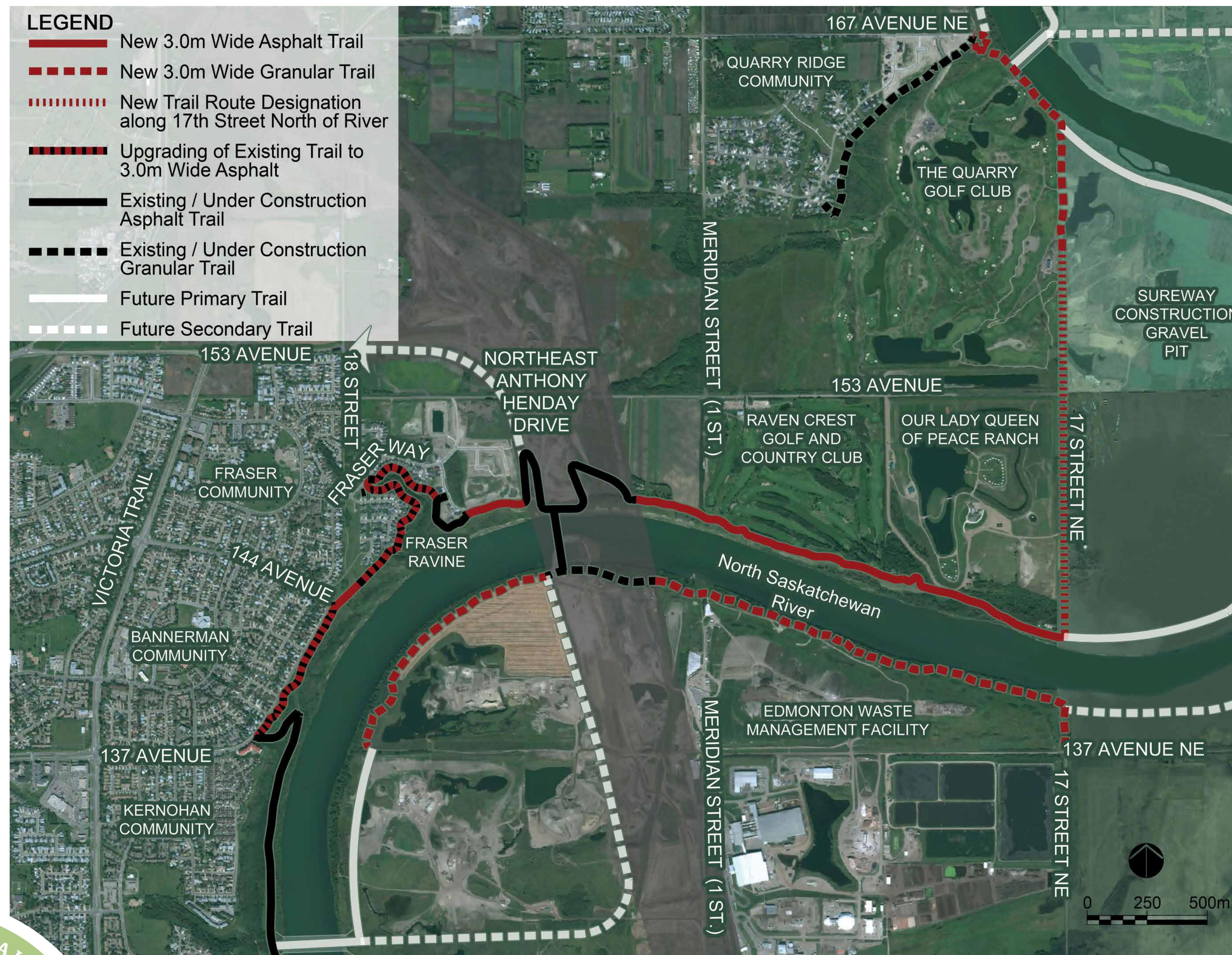
BOAT LAUNCHES AND DOCKS (7 PROJECTS)

- Three boat launches and seven docks added for public use: Rundle Park, Rafters Landing, Government Hill House Park, Hawrelak Park, Kinsmen Park, Laurier/Buena Vista Park, Terwillegar Park

MECHANIZED RIVER VALLEY ACCESS AND TOUCH THE WATER PROMENADE

- The waterfront promenade project will serve to develop the area next to the old EPCOR power station and the new Walterdale Bridge. The promenade may include amenities such as plazas, walkways and docks. The mechanized river access project will connect the downtown to the river valley trail system. The method of access has yet to be determined by City Council. Together, these initiatives are the next significant step towards creating a connected, world-class river valley system within the City of Edmonton.





EAST END TRAILS MAP

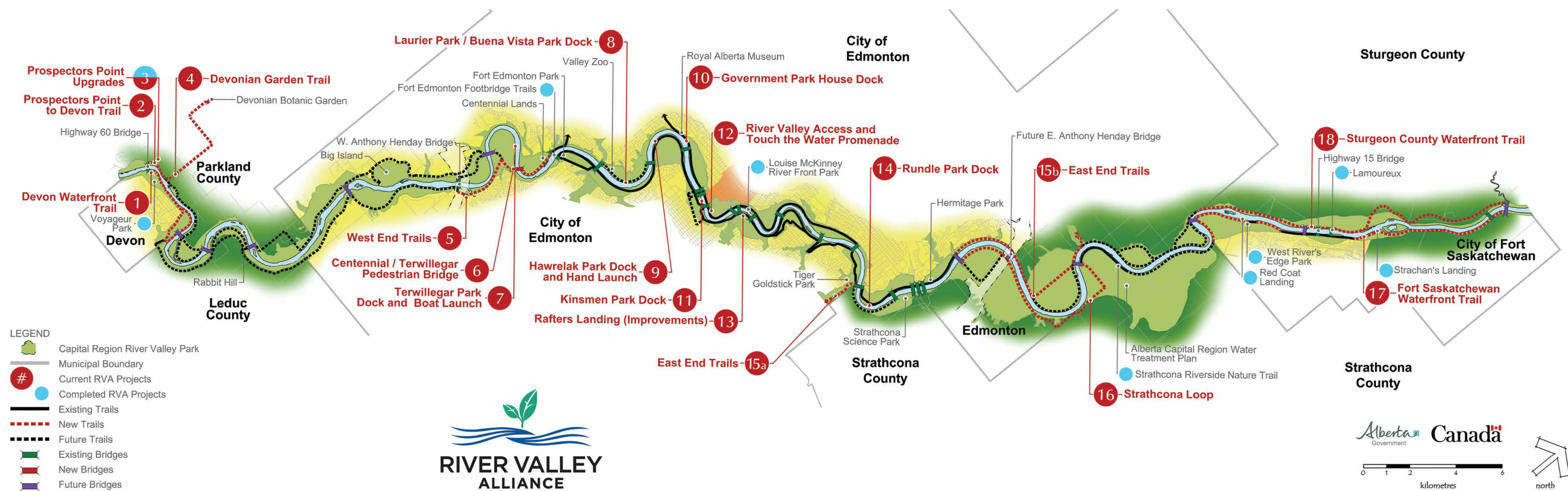


RIVER VALLEY ALLIANCE

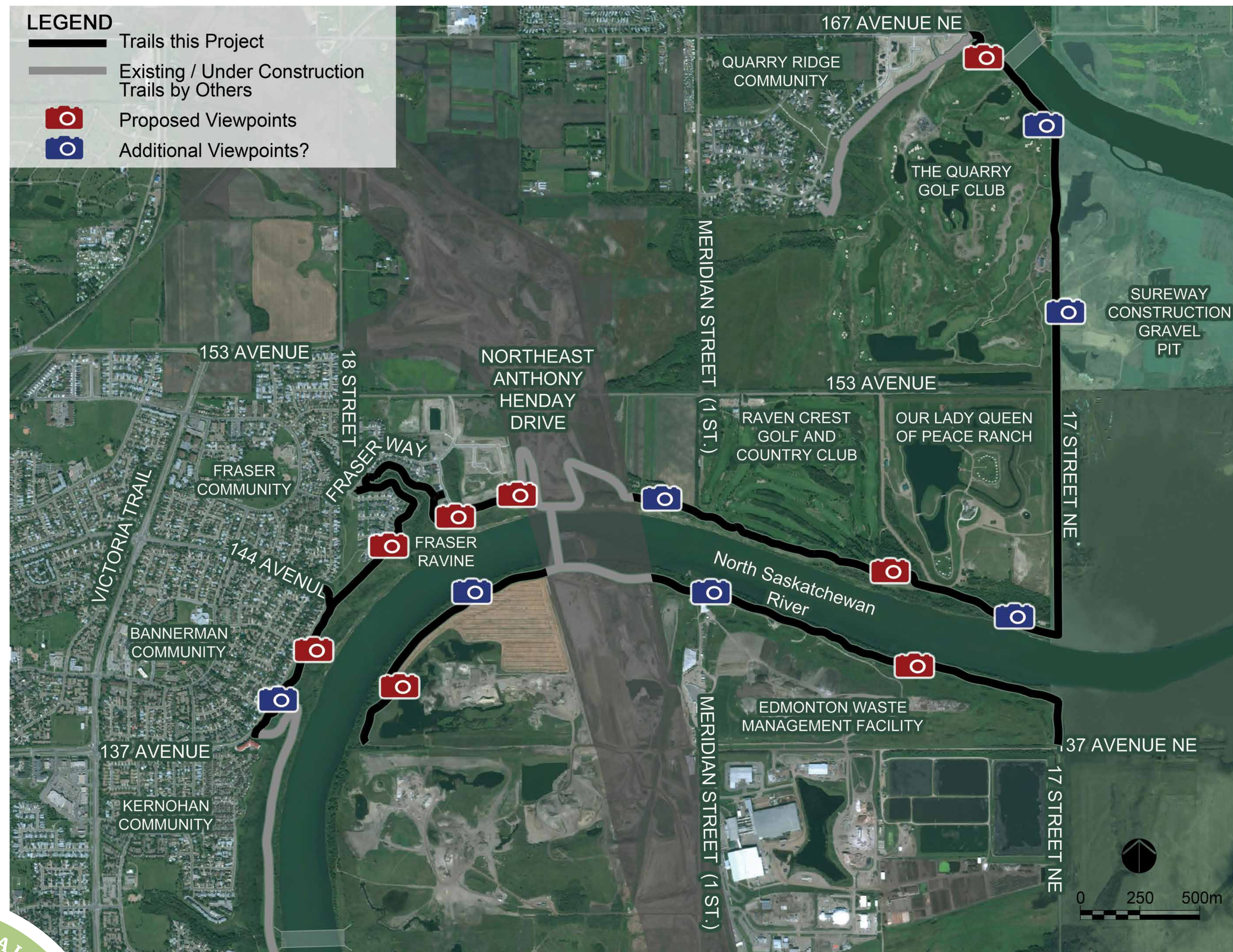
The Capital Project

An initiative of the River Valley Alliance

- Improve public access to the North Saskatchewan River and river valley
- 18 total projects
- 5 projects in Edmonton
- Approx \$72.9 million in funding for Edmonton



Capital Project 2012-2016



VIEWPOINTS



BASIC



UPGRADED



WITH SHELTER



VIEWPOINTS Level of Development





BASELINE UPGRADING



MODIFIED ALIGNMENT



MODIFIED ALIGNMENT & ADDITIONAL PLANTING



FRASER RAVINE Alignment





SHRUBS ONLY



SHRUBS AND TREES



FRASER RAVINE
Planting Height Adjacent to Fence



COMMENT FORM

March 1, 2014

Public Open House



Familiarity with the East End Trails

1. Please review the proposed route for the East End Trails and indicate how familiar you are with the area:

- a) Very Familiar b) Somewhat Familiar c) Not Familiar

East End Trails Initiative

2. Please rate your level of satisfaction with the East End Trails initiative overall.

- 1) Not at all Satisfied 2) Slightly Satisfied 3) Somewhat Satisfied 4) Satisfied 5) Very Satisfied

Please explain.

Level of Development:

Please review the *Viewpoints – Level of Development* display board and the three proposed options.

3. Please indicate which option for viewpoint development you prefer. Circle all that apply.

- a) Basic b) Upgraded c) Shelter d) No Opinion

4. If you prefer a combination of viewpoints, please explain. (For example, Majority are Basic with only a few Upgraded or Majority are Shelter with a few Basic, all are Upgraded with a few Shelter, etc.)

Number of viewpoints:

Please review the *Viewpoints* display board. The red camera icons represent currently proposed viewpoints and the blue camera icons illustrate that additional viewpoints are possible.

5. Do you believe the number of currently proposed (red camera) viewpoints is:

- a) Not Enough b) Sufficient c) Too Many d) No Opinion/Doesn't Matter

Please explain.

Other Comments

6. Do you have any additional comments on the East End Trails project?

About the Event

Your responses to the following questions will assist us in planning future meetings.

7. Using the following scale from 1 to 5 where 1 means Strongly Disagree and 5 means Strongly Agree. Please circle the appropriate number to indicate the extent to which you agree with each of the following statements:

	Strongly Disagree			Strongly Agree	
	1	2	3	4	5
• The information presented at the event was useful and informative.					
• The information was easy to understand.					
• The project representatives were helpful, friendly and available to talk to me.					
• I was able to find satisfactory answers to my questions.					
• I have a better understanding of the project because of my attendance.					
• Participating in this session was a good use of my time.					
• The venue location was appropriate.					

8. Which aspects of the meeting did you find most valuable? (Please check all that apply)

- ☐ Interaction with representatives
☐ Handouts

☐ Display boards

☐ Other (Please specify): _____

9. How did you hear about this meeting? (Please check all that apply)

- | | | |
|--|--|---|
| <input type="checkbox"/> Road side signs | <input type="checkbox"/> Word of mouth | <input type="checkbox"/> Newspaper advertisement |
| <input type="checkbox"/> Flyer in mailbox | <input type="checkbox"/> Email | <input type="checkbox"/> Community league website |
| <input type="checkbox"/> City of Edmonton website | <input type="checkbox"/> Social Media | <input type="checkbox"/> Poster |
| <input type="checkbox"/> Other (Please specify): _____ | | |

Thank you!

Please leave your comment form at the welcome desk or scan/email to vasenova@calderbateman.com or fax 780-425-6646 by midnight March 15, 2014.

River Valley East End Trails Connection

Familiarity with the East End Trails	Very Familiar	Somewhat Familiar	Not Familiar								
	13	11									
East End Trails Initiative	Not a all Satisfied	Slightly Satisfied	Somewhat Satisfied	Satisfied	Very Satisfied						
	1	2	14	7							
Level of Development	Basic	Upgraded	Shelter	No Opinion							
	14	13	9	1							
Number of Viewpoints	Not Enough	Sufficient	Too Many	No Opinion/Doesn't Matter							
	1	22	2	2							
	Strongly Disagree			Strongly Agree							
About the Event	1	2	3	4	5						
The information presented at the event was useful and informative.			2	11	11						
The information was easy to understand.			3	8	13						
The project representatives were helpful, friendly and available to talk to me.			1	6	17						
I was able to find satisfactory answers to my questions.			3	11	9						
I have a better understanding of the project because of my attendance.		1	1	9	13						
Participating in this session was a good use of my time.			2	8	14						
The venue location was appropriate.				9	15						
Which aspects of the meeting did you find most valuable?	Interaction with Representatives	Display Boards	Handouts	Other							
	21	21	12	4	Representative's knowledge						
					Sticky Notes on Map						
					Casual Meeting spot to talk to others						
					Yummy catering/very classy						
How did you here about this Meeting.	Road Signs	Word of Mouth	Flyer in box	Newspaper	Other						
	9	3	6	5	2	CRC, Community League					
Comments:											
East Trail Initiative											
Looks good, possibility of loops important. Put up mileage and maps like in Blackfoot grazing area.											
It will be great for NE Edmonton to have an improved outdoor area.											
I quite like the plans and hope they will happen fast.											
I think it will be a great addition and great use of the river valley.											
The initiative is about the future. It is also about what we as citizen have been given.											
I would like to see representative from bylaw to answer questions on keeping the trail safe. Homeless residents is a major issue in north east Edmonton.											
Happy to have it going but wishing for better loops.											
Glad to hear paving of existing gravel trails will be done.											
Please keep off leash dog area to a minimum.											
Its been a few years in the formative stages, it's good to see it happening.											
Awareness of the river, creating more park space, encouraging outdoor activity, preserving green space. All good.											
I am exited to see new trail development in this area. I am a big fan of the trail system and I am looking forward to hiking these new trails.											
Its good to see a plan is moving forward. No definite completion dates.											
Very glad the initiative is in place. Not satisfied it takes longer for the trails than it does for housing development or area development. Not satisfied that it is still not a fully envisioned plan done in stages. Edmonton city does too much on trails as piece-meal-approach. A little here and there but nothing complete. Too much of an attitude of it's good enough.											
I back onto dog park inside Fraser and the path will add enjoyment and utilization to area.											
The plan looks good however we would like to see how the trail system is integrated with the road system of the city, example how are people getting form Clareview LRT to the river if they bring their bikes on the weekend?											
Please ensure signage for off leash separation is done.											
Comments:											
Level of Development:											
Some shelter for adverse weather, like thunder storms.											
Rather have many basic to keep down the cost but in a few really good sites maybe upgraded.											

