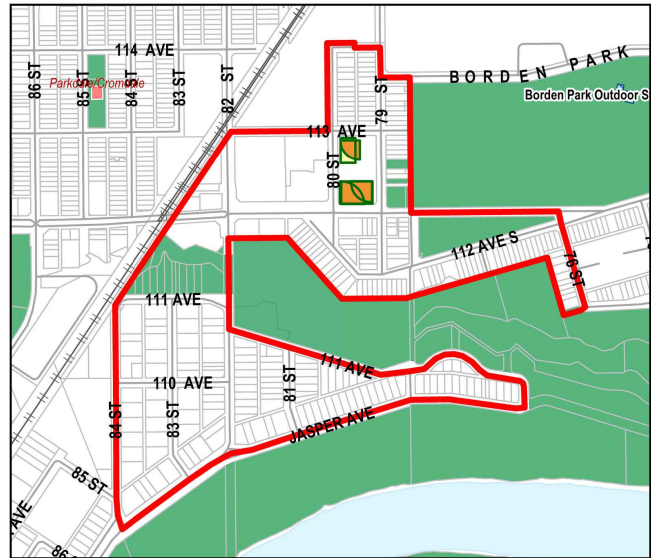
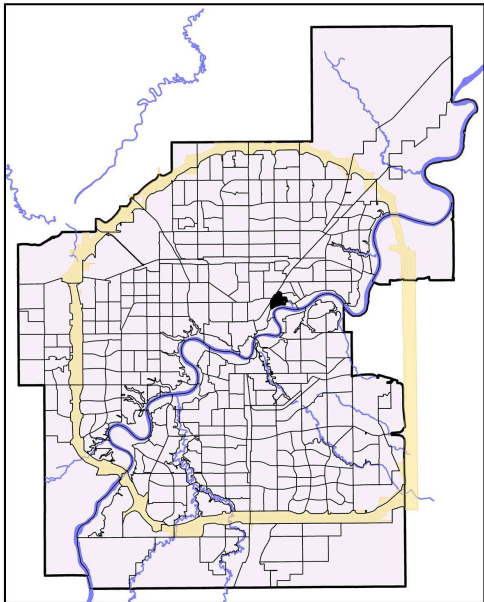


## 2010 Neighbourhood Indicators



### How to Read Indicators

### Legend

## Indicators

Social Health and Wellness	NSA	City Avg
# Child Welfare Cases	8	10.62
# of Lone Parent Families	80	149.47
# of People Who Have Moved in Past Year	765	610.70
Hospital Emergency Room Visit	392.73	351.84
Hospitalization Rate	64.85	62.86

Personal and Community Safety	NSA	City Avg
# Incidents of Property Crime	232	153.24
# Incidents of Violent Crime	28	19.13
# Offenses Committed by Juveniles	26	16.91

Education	NSA	City Avg
% of Population 20+ with Less Than Grade 9	21.45	21.55
School Transiency Rate		0.29

Housing	NSA	City Avg
# Dwellings Needing Major Repairs	140	75.57
% Dwellings which are Rented	68.26	28.29
# Households Paying > Than 30% of Income on Shelter Costs	435	313.84

Economic/Employment	NSA	City Avg
# Households with Low Income	160	103.50
% Unemployed (25+)	4.92	2.69
# of Hamper Users	106	135.08
# SFI Recipients - (#)	61	86.80

Physical and Natural Environment	NSA	City Avg
Condition of Playgrounds		2.70
Condition of Sidewalks and Roadways	9.70	13.65

## Demographics

	NSA	City Avg
Population 2009	2,079	782,439
Median Household Income*	32,964	57,085
Average House Assessment 2010	401,033	360,723
Average Rent Cost*	609	761

### Note:

NSA - Neighbourhood Statistical Area  
 City Average (City Avg) is based on participating neighbourhoods used in the study.  
 Missing value indicates the absence of data available for the study.  
 \* Base on 2006 Census