

# Clareview

**Project Update**  
February 2013



## Clareview Arena: A Proud History

For more than 20 years the Clareview Twin Arena has faithfully served the ice users of Edmonton. Boasting the City's only Olympic-sized sheet of ice, it has been home to the Concordia Thunder hockey team, speed skating, figure skating, countless hockey tournaments, public skating, and a wide variety of other ice users. The large multipurpose room hosted banquets, gatherings and teen dances. But time has been hard on the facility. Ongoing roof leaks and foundation problems have stacked up, along with functional challenges such as a once-grand (but now-obsolete) fountain and fireplace in the lobby.

## Arena Renovations

The opportunity to renovate the facility was seized when City Council approved plans for the new Clareview Community Recreation Centre and Clareview Library. The new facility will include a multi-purpose recreation centre, a library, and an academic centre in addition to an extensively upgraded arena facility. That means the existing arena building is being enveloped on three sides by the new facilities – we're working to ensure all will appear and function smoothly as one building.

The planned renovations to the arena were extensive to begin with, but the amount of work increased significantly after demolition revealed hidden issues that could not be ignored. These included structural issues that required complete removal and rebuilding of exterior arena walls. All electrical, insulation, and interior and exterior cladding for these walls also has to be rebuilt.



Top: Rink B looking Northwest  
Middle: New Arena Cladding Underway  
Bottom: Northwest Corner of Rink B

The full slate of renovations now includes:

- New roof
- Addition of dressing rooms for referees, coaches, etc.
- Addition of a multi-purpose 'tournament' room
- More functional lobby:
  - Removal of obsolete fountain and fireplace
  - Relocated office, retail space, and meeting rooms
  - Consolidated concession and lobby space
  - Optimized arena entry locations
- More parking
- Renovated public washrooms
- Reworked electrical and sound systems
- New radiant heating unit for spectator comfort
- New interior cladding system
- Additional mechanical space to house a new, larger, more efficient ice plant
- Energy efficient and durable ceiling panels over the rinks
- New dehumidifiers to enhance energy efficiency of the ice plant
- Redesigned ice maintenance room to allow for back-to-back floods
- Much, much more



Southwest Corner of Rink B

Renewed arena spaces will be hardly recognizable when you visit Clareview again! We're excited and we hope you are too.

## Arena Completion Schedule

When construction of the new Clareview Community Recreation Centre and Clareview Library began, it was hoped that the arena could be returned to service in 2013 – in advance of the new facilities. But the issues revealed during demolition meant that more time would be needed to address them and complete all of the other arena renovations.

As well, the new facility has been designed to function as one building. The separate building components will share a variety of common systems, like fire and life-safety, heating/cooling, security, and parking. These systems will not be ready to support opening the arena early. And then there are the safety risks to workers and the public that arise by allowing access to the arenas while other construction is ongoing at the site.

In view of all of those factors, it has been decided not to open the Clareview Arena early, but rather, to open the entire Clareview Community Recreation Centre and Clareview Library when 100% ready in 2014.



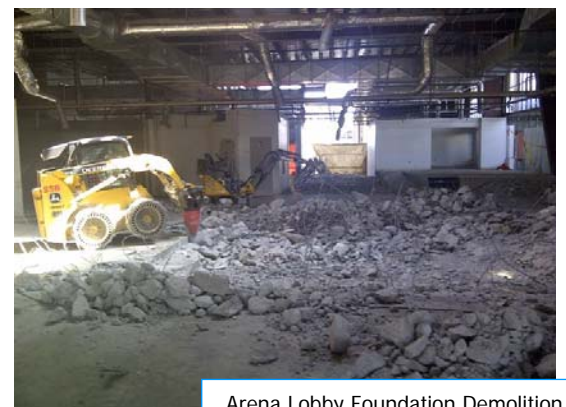
Community Services  
PO Box 2359  
Edmonton, AB T5J 2R7

Phone: 311

[www.edmonton.ca/clareviewhub](http://www.edmonton.ca/clareviewhub)



We remain committed to a well-constructed, safe and fully-functional arena as part of the new, vibrant recreation centre. Watch for more updates on construction and information on the many features and benefits of our new facilities!



Arena Lobby Foundation Demolition