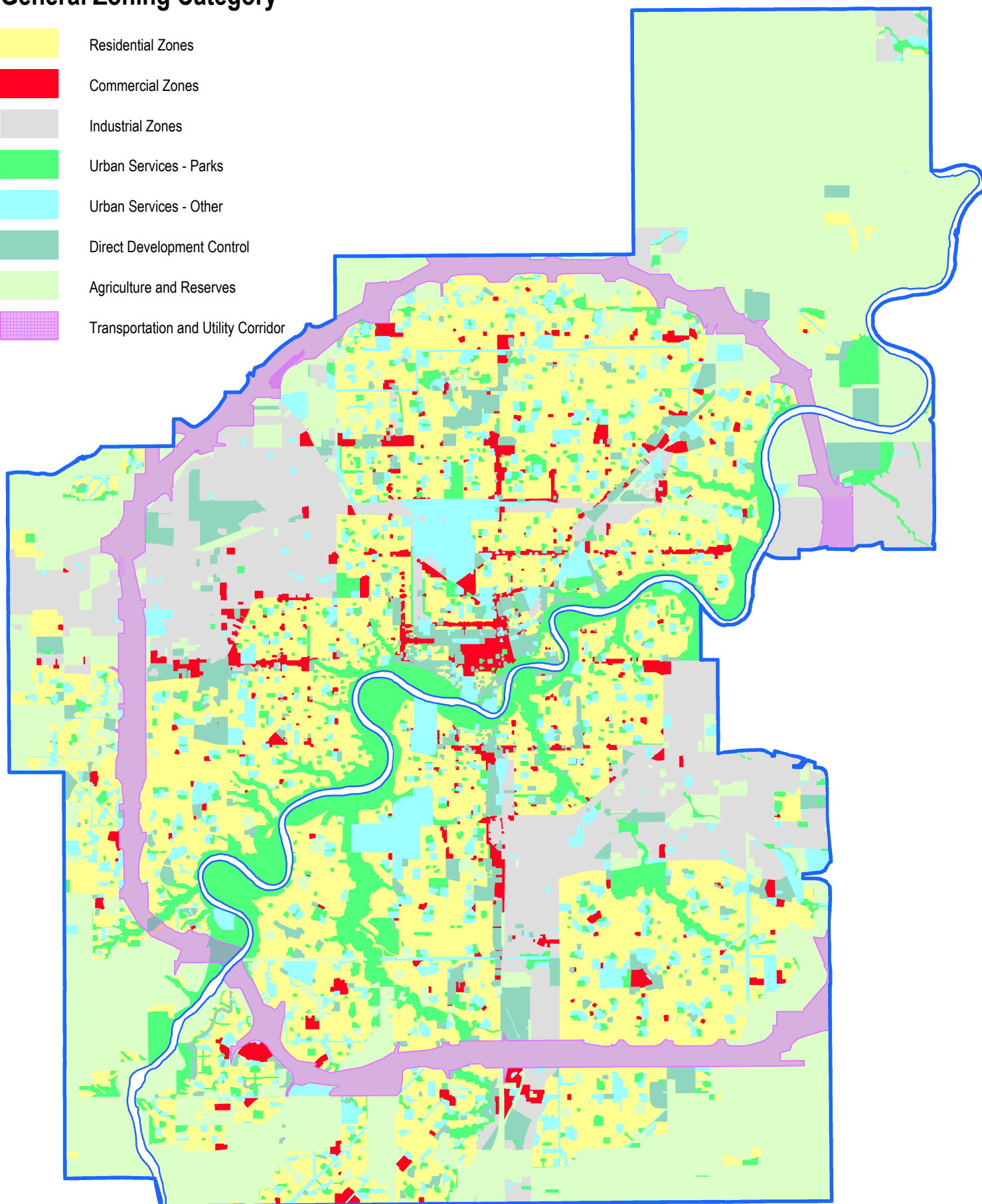


General Zoning Category

-  Residential Zones
-  Commercial Zones
-  Industrial Zones
-  Urban Services - Parks
-  Urban Services - Other
-  Direct Development Control
-  Agriculture and Reserves
-  Transportation and Utility Corridor



Zoning by General Land Use Category - May 2014

Category	Area (km sq)	% City Total	Zones Included in Category
Residential	221.8	31.7%	RF1-RF6, RA7-RA9, RSL, RPL, RMD, RMH, RR, RMU, TSDR, TSLR, RPLt, RF4t, RF5t, RA7g, RF5g, RA7w, HDR, GLD, GLG, CCSF, CCLD, CCMD, CCHD, HVLD, UCRH, GHLD
Commercial	17.4	2.5%	CB1, CB2, CB3, CHY, CNC, CSC, CO, CCA, EZ, HA, MSC, TMU, CCNC, GVC, UVCa, CSCa, CSCw, UW, JAMSC, AED, TC-C
Industrial (Total)	81.9	11.7%	
Industrial (excluding TUC)	80.3		IB, IL, IM, IH, EIB, EIM, IC, EETB, EETC, EETL, EETM
Industrial in TUC	1.6		
Urban Services (Total)	111.3	15.9%	
Parks (excluding TUC)	64.1		A, AP, AN, NA
Parks Zones in TUC	1.0		
Institutional, Utilities, Other	46.2		US, PU, AJ, MA, MA1-MA3, CS1-CS4, UI
Direct Development Control	29.6	4.2%	DC1, DC2, DC(RDA)
Agriculture and Reserves (Total)	238.1	34.0%	AG, AGI, AGU, EETR
Agriculture and Reserves (excluding TUC)	195.4		
Agriculture and Reserves (in TUC)	42.7		
Total (All Zoning)	700.0	100.0%	
TUC (COE Area Total)	45.3		