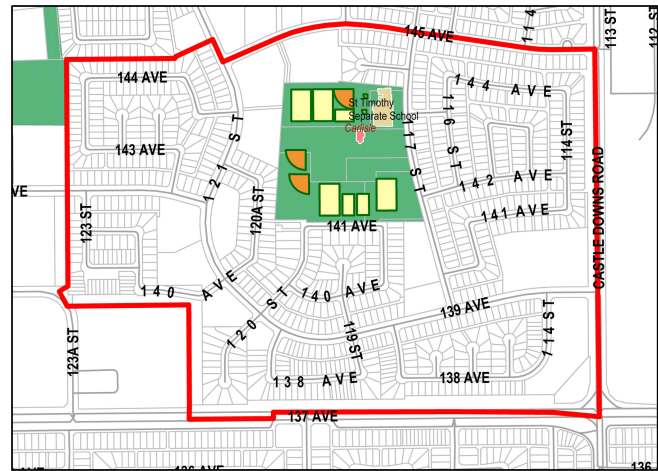
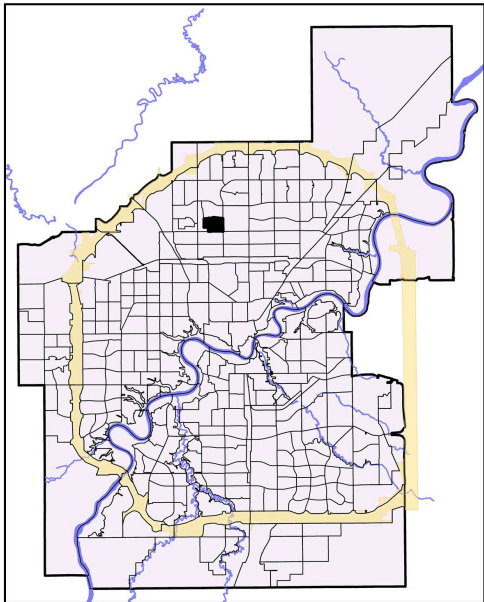


2010 Neighbourhood Indicators



How to Read Indicators

Legend

Indicators

| Social Health and Wellness | NSA | City Avg |
|---|--------|----------|
| # Child Welfare Cases | 26 | 10.62 |
| # of Lone Parent Families | 270 | 149.47 |
| # of People Who Have Moved in Past Year | 750 | 610.70 |
| Hospital Emergency Room Visit | 316.84 | 351.84 |
| Hospitalization Rate | 45.69 | 62.86 |

| Personal and Community Safety | NSA | City Avg |
|-----------------------------------|-----|----------|
| # Incidents of Property Crime | 114 | 153.24 |
| # Incidents of Violent Crime | 13 | 19.13 |
| # Offenses Committed by Juveniles | 13 | 16.91 |

| Education | NSA | City Avg |
|--|-------|----------|
| % of Population 20+ with Less Than Grade 9 | 28.57 | 21.55 |
| School Transiency Rate | | 0.29 |

| Housing | NSA | City Avg |
|---|-------|----------|
| # Dwellings Needing Major Repairs | 85 | 75.57 |
| % Dwellings which are Rented | 31.27 | 28.29 |
| # Households Paying > Than 30% of Income on Shelter Costs | 375 | 313.84 |

| Economic/Employment | NSA | City Avg |
|------------------------------|------|----------|
| # Households with Low Income | 235 | 103.50 |
| % Unemployed (25+) | 4.62 | 2.69 |
| # of Hamper Users | 171 | 135.08 |
| # SFI Recipients - (#) | 44 | 86.80 |

| Physical and Natural Environment | NSA | City Avg |
|-------------------------------------|-------|----------|
| Condition of Playgrounds | 3.00 | 2.70 |
| Condition of Sidewalks and Roadways | 12.60 | 13.65 |

Demographics

| | NSA | City Avg |
|-------------------------------|---------|----------|
| Population 2009 | 3,939 | 782,439 |
| Median Household Income* | 62,117 | 57,085 |
| Average House Assessment 2010 | 301,683 | 360,723 |
| Average Rent Cost* | 845 | 761 |

Note:

NSA - Neighbourhood Statistical Area

City Average (City Avg) is based on participating neighbourhoods used in the study.

Missing value indicates the absence of data available for the study.

* Base on 2006 Census