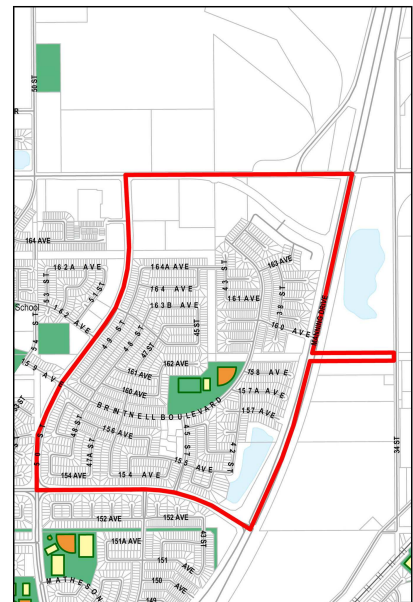
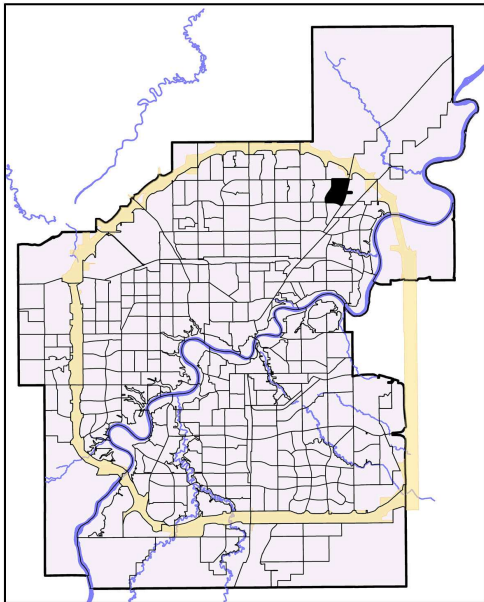


2010 Neighbourhood Indicators



[How to Read Indicators](#)

[Legend](#)

Indicators

Social Health and Wellness	NSA	City Avg
# Child Welfare Cases	16	10.62
# of Lone Parent Families	40	149.47
# of People Who Have Moved in Past Year	1,035	610.70
Hospital Emergency Room Visit	676.76	351.84
Hospitalization Rate	53.30	62.86

Personal and Community Safety	NSA	City Avg
# Incidents of Property Crime	43	153.24
# Incidents of Violent Crime	1	19.13
# Offenses Committed by Juveniles		16.91

Education	NSA	City Avg
% of Population 20+ with Less Than Grade 9	20.41	21.55
School Transiency Rate		0.29

Housing	NSA	City Avg
# Dwellings Needing Major Repairs	10	75.57
% Dwellings which are Rented	2.99	28.29
# Households Paying > Than 30% of Income on Shelter Costs	160	313.84

Economic/Employment	NSA	City Avg
# Households with Low Income	30	103.50
% Unemployed (25+)	3.25	2.69
# of Hamper Users		135.08
# SFI Recipients - (#)		86.80

Physical and Natural Environment	NSA	City Avg
Condition of Playgrounds		2.70
Condition of Sidewalks and Roadways	19.70	13.65

Demographics

	NSA	City Avg
Population 2009	4,522	782,439
Median Household Income*	80,218	57,085
Average House Assessment 2010	360,531	360,723
Average Rent Cost*	1,336	761

Note:

NSA - Neighbourhood Statistical Area

City Average (City Avg) is based on participating neighbourhoods used in the study.

Missing value indicates the absence of data available for the study.

* Base on 2006 Census