

City of Edmonton

Boyle Renaissance Update

Keeping you informed

In This Issue:

- Phase I Progress
 - Positive Relationships p.1
 - Design p.2
 - Construction p.3
- Phase II Progress: Housing p.4
- 104 Ave Funding Update p.3
- York Hotel Status Update p.3
- Next Steps: Council Report p.4



Project partners:



**Boyle Street
Community
League**



**Government
of Alberta**

This newsletter is produced by the Boyle Renaissance Working Committee on behalf of the Phase 1 initiative partners

What is Boyle Renaissance?

It's a community plan to renew and redevelop the area between 95 Street and 96 Street, from 103A Avenue north to the LRT tracks.

Working together

This newsletter is intended to be an interim update for Committee members and the community-at-large.

The City of Edmonton and Boyle Renaissance Initiative project sponsors would like to thank participating members of the Boyle Renaissance Advisory Committee (BRAC) for their past involvement in this project.

We believe that the Committee should reconvene in the Spring of 2011 to understand the evolution of the project, committee structure, and what lies ahead.

The Committee would also discuss how to continue community engagement as work progresses.



Phase I Progress: Positive relationships

Special thanks to all of our partners for their continued work and support on this important project. Our sincere appreciation goes to the Boyle Street Community League for their ongoing help and support to achieve the Boyle Renaissance vision.

We'd like to take this opportunity to thank all residents of the local communities involved in this project. Your continued input and understanding have been invaluable to the Committee and the City of Edmonton as we work towards our common goal of a sustainable community that meets everyone's needs.

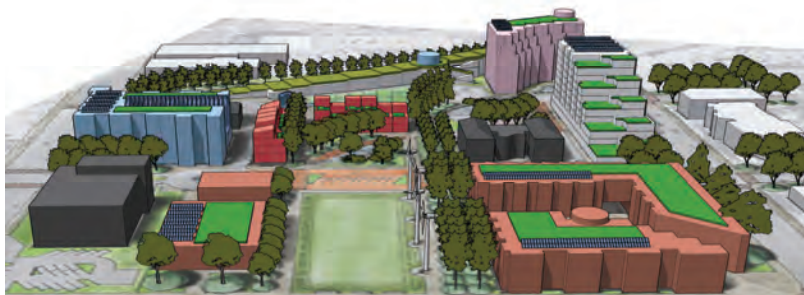
The Edmonton Oilers Community Foundation has been a great partner throughout the Boyle Renaissance process. We're pleased to report they've made progress in acquiring a new permanent home for the Inner City Youth Development Association (ICYDA) High School outside the Boyle Renaissance area. The City of Edmonton will continue to work with the ICYDA. We welcome Mark Garrett, who brings 34 years of experience with the City's Planning and Development department to the new challenge of managing a seamless transition for the Inner City High School and its students.

Phase I Progress: Design

Detailed design and planning activities are in full swing.

Site plan

Thanks to the BRAC Subcommittee appointed to work with the Phase I architects and project managers. They have dedicated considerable time and effort to get the designs to their current state. The designs continue to evolve and be refined to meet the current budget. Site and architectural plans continue to change as costs are refined. For more information on Phase I, contact Paul Ross, Wylie Stafford or Tim Haak at CP Ross Consulting, (780) 760-4641.



Part of the current site plan showing the view facing north. Construction will begin on the western side of the project. The LRT tunnel is visible running diagonally across the north boundary with community garden space planned for the space just south of it.

The updated Phase I site plan can be viewed at edmonton.ca/boylerenaissance.



Community garden

Senior City of Edmonton Planner Brent Croucher has been working closely with the BRAC Subcommittee to plan the development of a new community garden site adjacent to the LRT tunnel as shown on the Site Master Plan. The City is working with community garden experts as well as local residents and garden users to do this in a way that makes sense and makes effective use of green space.



Geothermal energy

We have a unique opportunity to use geothermal energy to offset ongoing maintenance and operational costs that are associated with conventional technologies. Geothermal energy offers a way of using a single power source to generate both heat and power. This is also called **cogeneration**. Initial testing for geothermal heating and electrical systems has been completed. Further work is underway to determine if these new systems would be cost-effective and justify further capital investment. More information is expected in the coming months. In the meantime, you can direct questions to Wylie Stafford, Project Manager, Phase I at CP Ross Consulting, (780) 760-4641.



Heat exchangers and circulation pumps for a geothermal district heating system in Klamath Falls, Oregon. Courtesy of DOE/NREL, Credit - Geo-Heat Center, Oregon Institute of Technology.

For more information, visit www.edmonton.ca/boylerenaissance

News in Brief

104 Avenue

The design process is underway for proposed improvements to 104 Avenue. The designs incorporate the principles of the Downtown Master Plan and urban design guidelines as approved by the Boyle Renaissance Advisory Committee. Funding for these improvements will be incorporated into the City's Community Revitalization Levy Plan, and will be reviewed by Council in the coming months.

York Hotel Status



York Hotel circa 1947, Courtesy City Archives

The City is actively looking for potential partners to occupy the existing York Hotel building. Some groups have already expressed an interest, and the City is working with them to assess their needs.

Potential renovation costs have made it difficult for the City to find potential tenants who are a good fit for this unique space. Finding a new tenant will ensure that the historic façade of the building is maintained in the short term, and gives the City some time to come up with a long-term solution for this corner of the project.

Phase I Progress: Construction

The groundbreaking for Phase I is on track for December 2010. The final design for the YMCA Welcome Village includes 150 progressive, affordable housing units, a Family Resource Centre and a daycare, sponsored by the YMCA and Capital Region Housing. The City of Edmonton is contributing \$3.5 million to this part of the project, and the Government of Alberta has committed \$24 million in funding. The City is also contributing \$6 million towards a new Community Centre, which is a joint initiative with the Boyle Street Community League.



The first stage of construction will occur on the western limits of the site and will include extensive excavation for an underground parkade and what will be the Community Centre, Family Resource Centre and daycare.

On June 30th, Council's Executive Committee considered a report from City Administration about the termination of a tripartite license agreement between the City of Edmonton, Boyle Street Community League and the Edmonton Federation of Community Leagues.

After hearing from the Community League, the YMCA and the Inner City Youth Development Association, Executive Committee decided to recommend that Council cancel the agreement in order to avoid further construction delays.

Council cancelled the agreement on July 7th. This effectively means that the Community League Building will be vacated no later than January 2011 in time for the next construction season.

The City of Edmonton is working co-operatively with all involved to find ways of balancing everyone's needs and ensuring that progress continues with the Boyle Renaissance project as a whole.

For more information on Phase I, contact Paul Ross, Wylie Stafford or Tim Haak at CP Ross Consulting, (780) 760-4641.



News in Brief

Next Steps:

Council Report



A report to City Council on the Boyle Renaissance project will be going forward, likely in No-

vember as Council reviews the City Budget.

This report will be presented to Council for information.

The Council meeting schedule and agendas for November remain unofficial until they are approved by Council after the Civic Election on October 18th.



Some members of the 2007-2010 City Council at a Council meeting.

Contact Us

For more information on the Boyle Renaissance project, please contact:

Phase II Progress: Housing

Aboriginal (Seniors Housing and Persons with Disabilities) and Transitional Services Facility

The City of Edmonton has collaborated with many Aboriginal partners, nonprofit organizations and other orders of government to find available federal and provincial funding to complete this special part of the Boyle Renaissance project.



Mayor Stephen Mandel and Councillor Ron Hayter joined federal and provincial ministers in supporting these efforts.

The main challenges have been the costs associated with the building design and locating funds that could be allocated to a project of this

complex nature. Discussions are now underway with all stakeholders to reduce the scale and cost of the facility. The City has allocated \$1.66 million in capital funding and \$3 million in Cornerstones funding to this part of the project. Planning and design is underway for construction to begin on the housing component in Fall 2011. The City is in the process of clearing the space formerly occupied by the Butte Apartments and the Golden Harvest Theatre to prepare the area for Phase II construction.

The project will provide 90 units of affordable, accessible seniors' accommodations.

This housing will be made available first to those in need in the local community, then to those in need in the Aboriginal community, and finally to potential tenants from the paraplegic community.



Brent Croucher, Senior Planner and Project Manager

Boyle Renaissance Project Office, Planning & Development Department, City of Edmonton

Phone: (780) 442-0920, brent.croucher@edmonton.ca

www.edmonton.ca/boylerennaissance