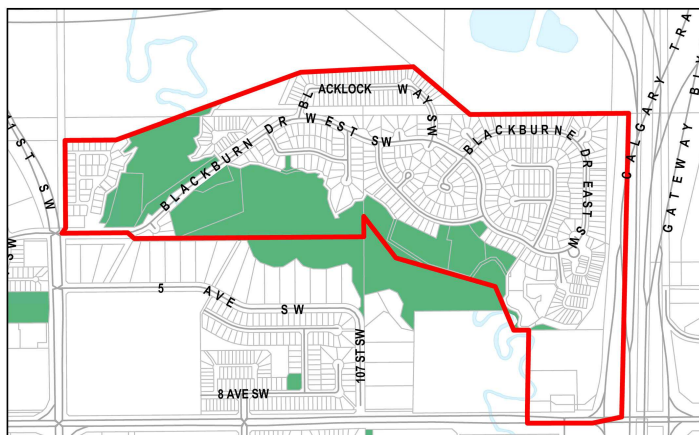
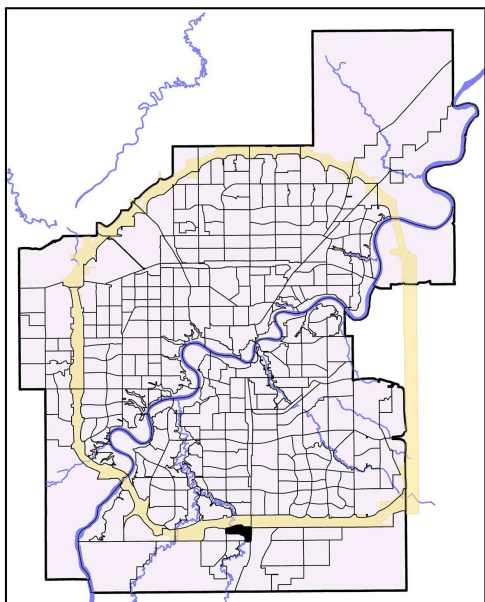


# BLACKBURNE

## 2010 Neighbourhood Indicators



### [How to Read Indicators](#)

### [Legend](#)

## Indicators

Social Health and Wellness	NSA	City Avg
# Child Welfare Cases	5	10.62
# of Lone Parent Families	35	149.47
# of People Who Have Moved in Past Year	235	610.70
Hospital Emergency Room Visit	214.06	351.84
Hospitalization Rate	49.90	62.86

Personal and Community Safety	NSA	City Avg
# Incidents of Property Crime	19	153.24
# Incidents of Violent Crime	2	19.13
# Offenses Committed by Juveniles	1	16.91

Education	NSA	City Avg
% of Population 20+ with Less Than Grade 9	9.58	21.55
School Transiency Rate		0.29

Housing	NSA	City Avg
# Dwellings Needing Major Repairs	20	75.57
% Dwellings which are Rented	6.14	28.29
# Households Paying > Than 30% of Income on Shelter Costs	70	313.84

Economic/Employment	NSA	City Avg
# Households with Low Income	20	103.50
% Unemployed (25+)	2.69	2.69
# of Hamper Users		135.08
# SFI Recipients - (#)		86.80

Physical and Natural Environment	NSA	City Avg
Condition of Playgrounds	3.00	2.70
Condition of Sidewalks and Roadways	15.80	13.65

## Demographics

	NSA	City Avg
Population 2009	1,510	782,439
Median Household Income*	88,207	57,085
Average House Assessment 2010	433,320	360,723
Average Rent Cost*	821	761

### Note:

NSA - Neighbourhood Statistical Area

City Average (City Avg) is based on participating neighbourhoods used in the study.

Missing value indicates the absence of data available for the study.

\* Base on 2006 Census