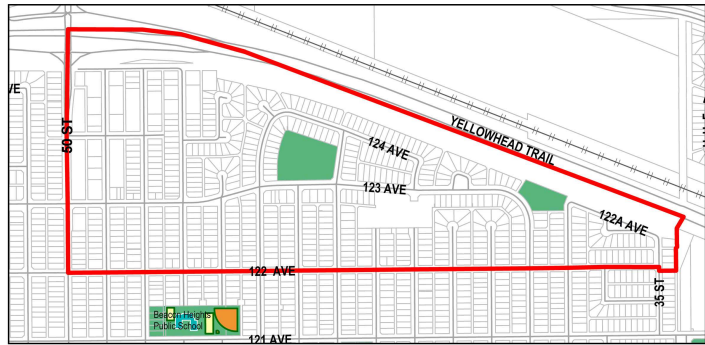
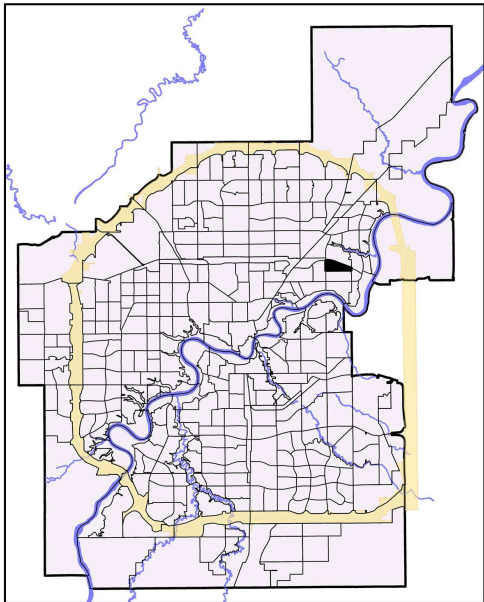


2010 Neighbourhood Indicators



How to Read Indicators

Legend

Indicators

Social Health and Wellness	NSA	City Avg
# Child Welfare Cases	5	10.62
# of Lone Parent Families	110	149.47
# of People Who Have Moved in Past Year	265	610.70
Hospital Emergency Room Visit	400.99	351.84
Hospitalization Rate	51.23	62.86

Personal and Community Safety	NSA	City Avg
# Incidents of Property Crime	57	153.24
# Incidents of Violent Crime	3	19.13
# Offenses Committed by Juveniles	11	16.91

Education	NSA	City Avg
% of Population 20+ with Less Than Grade 9	34.34	21.55
School Transiency Rate		0.29

Housing	NSA	City Avg
# Dwellings Needing Major Repairs	35	75.57
% Dwellings which are Rented	13.27	28.29
# Households Paying > Than 30% of Income on Shelter Costs	90	313.84

Economic/Employment	NSA	City Avg
# Households with Low Income	50	103.50
% Unemployed (25+)	3.79	2.69
# of Hamper Users	22	135.08
# SFI Recipients - (#)		86.80

Physical and Natural Environment	NSA	City Avg
Condition of Playgrounds	3.00	2.70
Condition of Sidewalks and Roadways	13.85	13.65

Demographics

	NSA	City Avg
Population 2009	1,433	782,439
Median Household Income*	75,015	57,085
Average House Assessment 2010	279,276	360,723
Average Rent Cost*	1,053	761

Note:

NSA - Neighbourhood Statistical Area

City Average (City Avg) is based on participating neighbourhoods used in the study.

Missing value indicates the absence of data available for the study.

* Base on 2006 Census