



SUGGESTED ZERO LOT-LINE & PARTY WALL CONSTRUCTION DETAIL

Edmonton

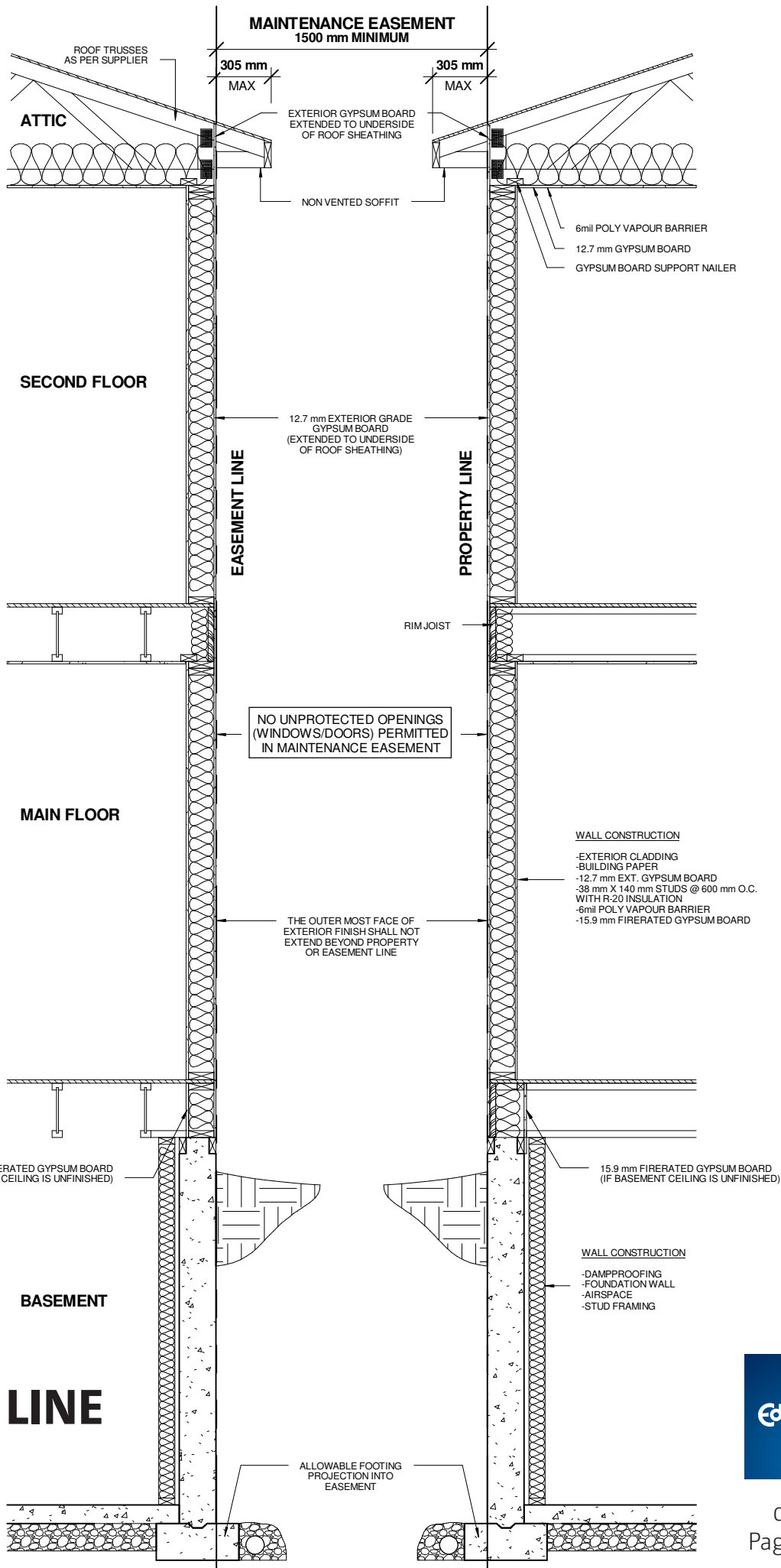
These sample drawings show suggested wall construction for Zero Lot-Line and Party Wall applications with intent to meet the Alberta Building Code without requirement for a variance.

All details shown are general and not intended to provide specific construction detail or materials.

Any use of these details is optional.

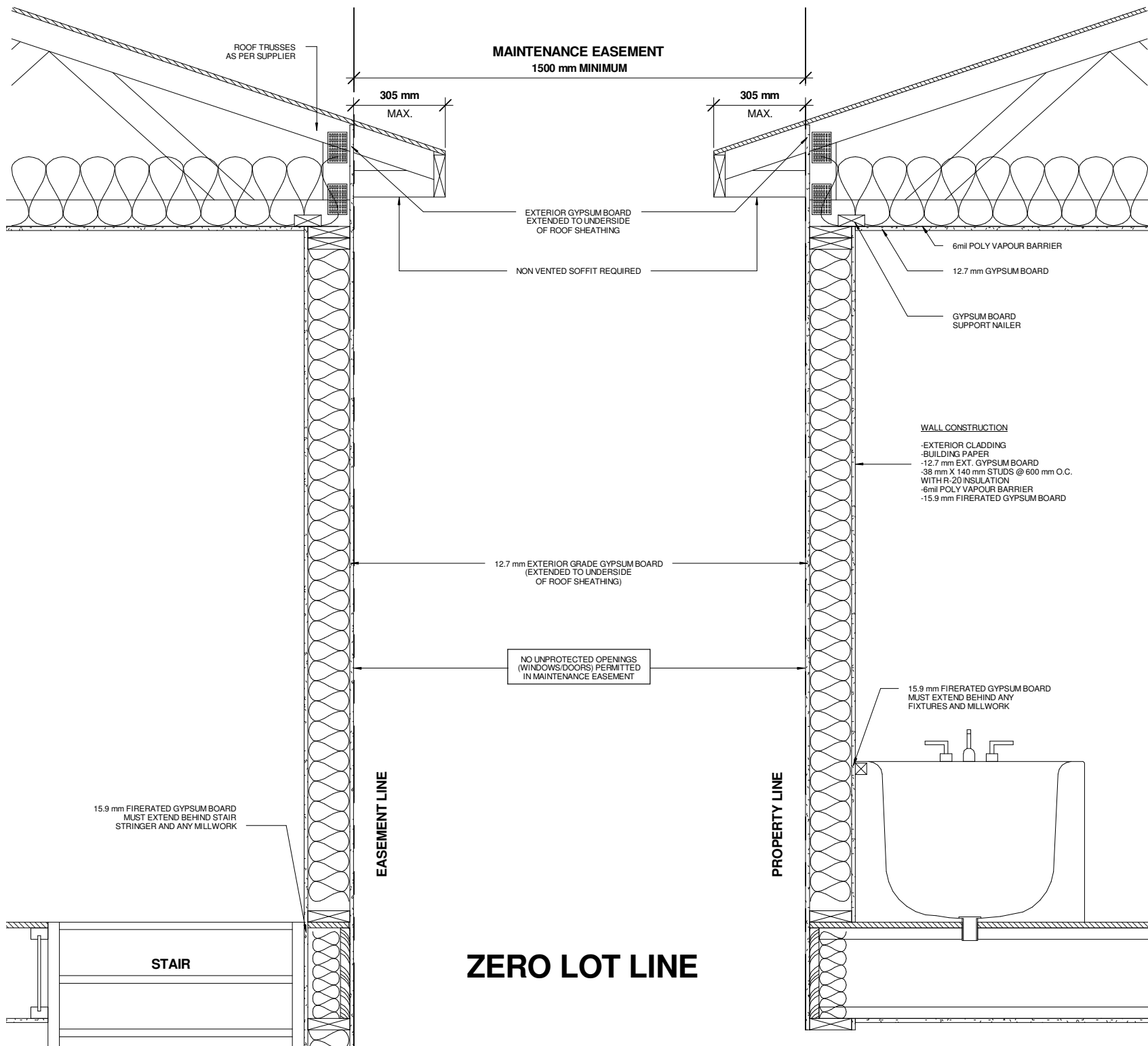
All construction drawings or details submitted for Building Permit application are subject to review and approval by the City Of Edmonton.

Should you have any questions related to these details, call 311 to speak with the Plan Examination Supervisor.

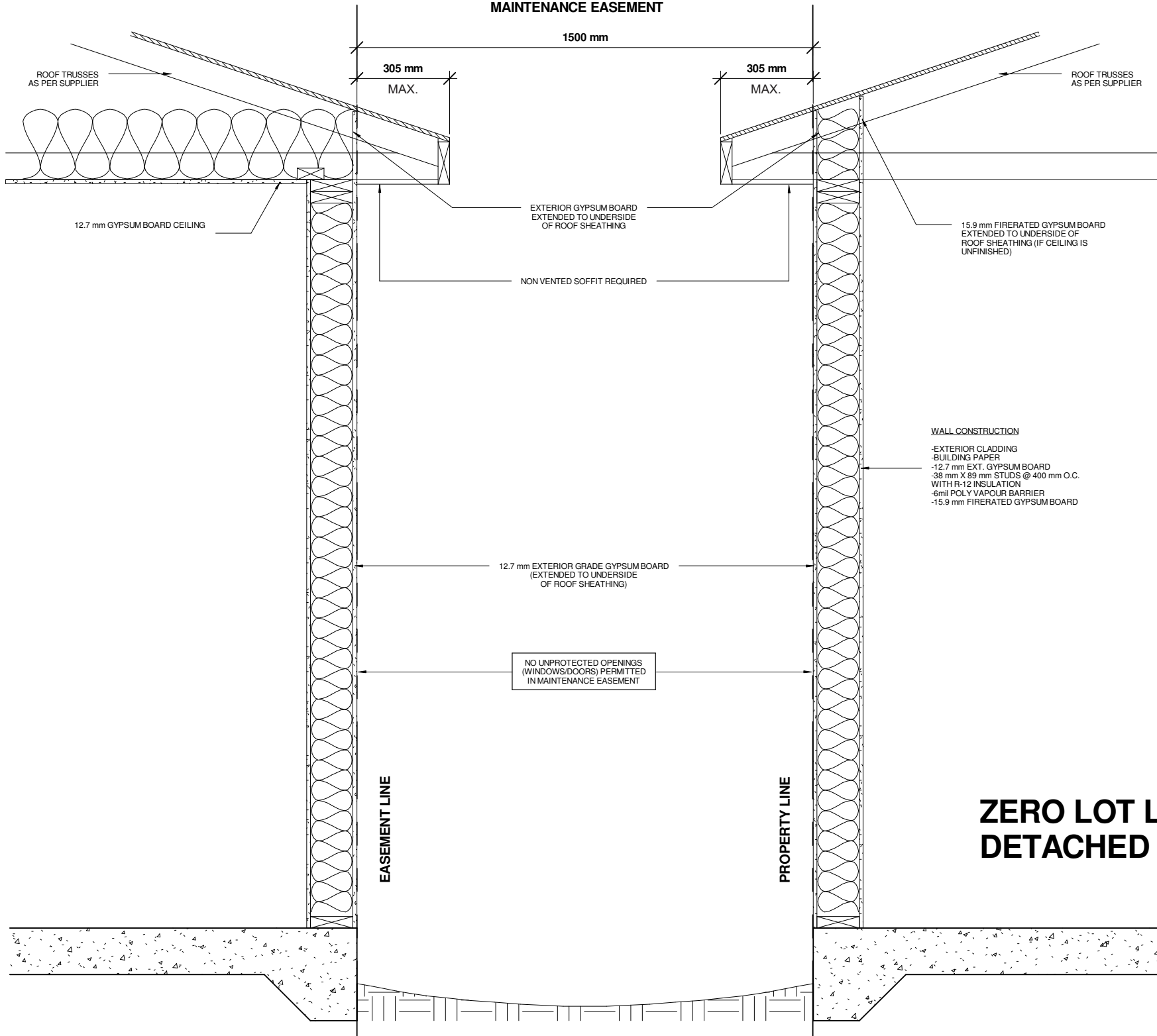


ZERO LOT LINE



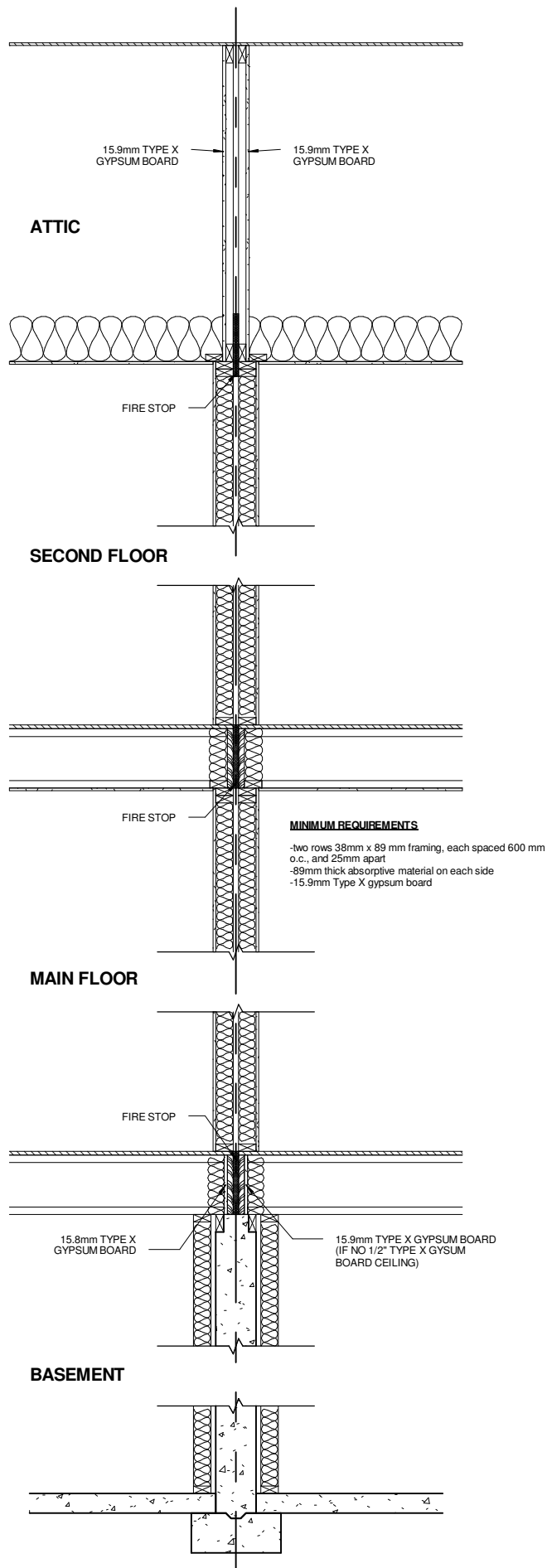


MAINTENANCE EASEMENT



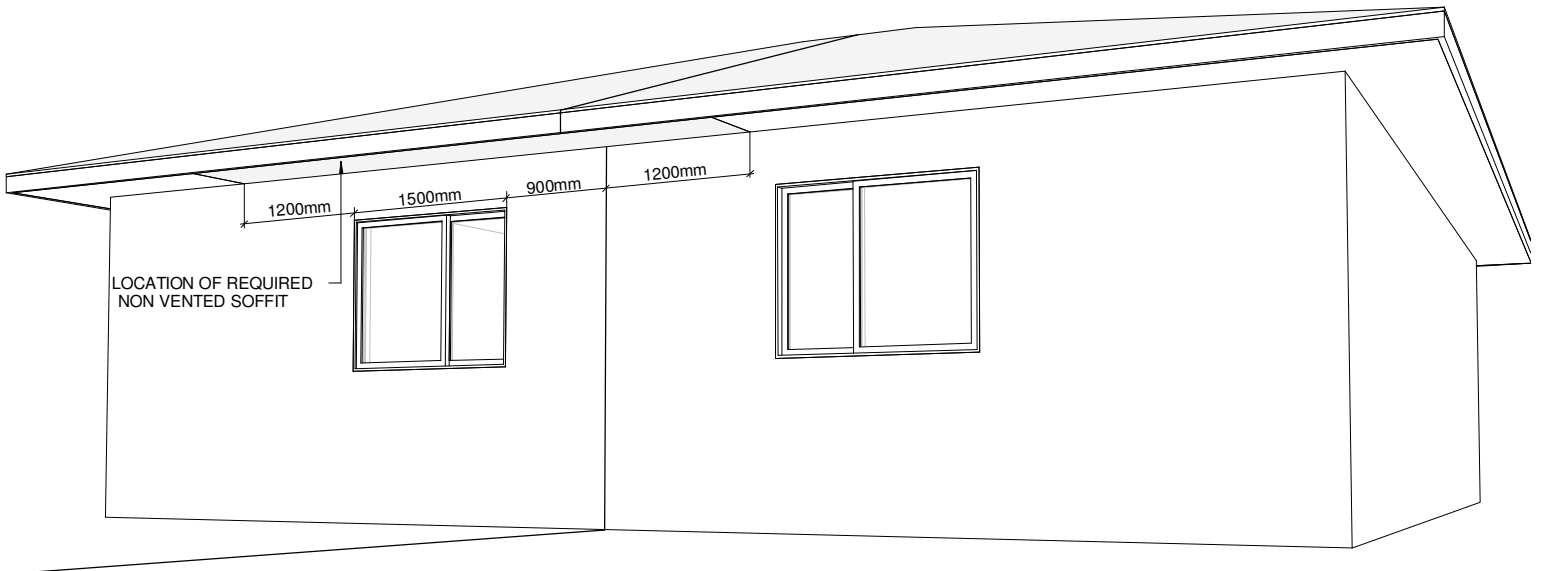
**ZERO LOT LINE
DETACHED GARAGE**



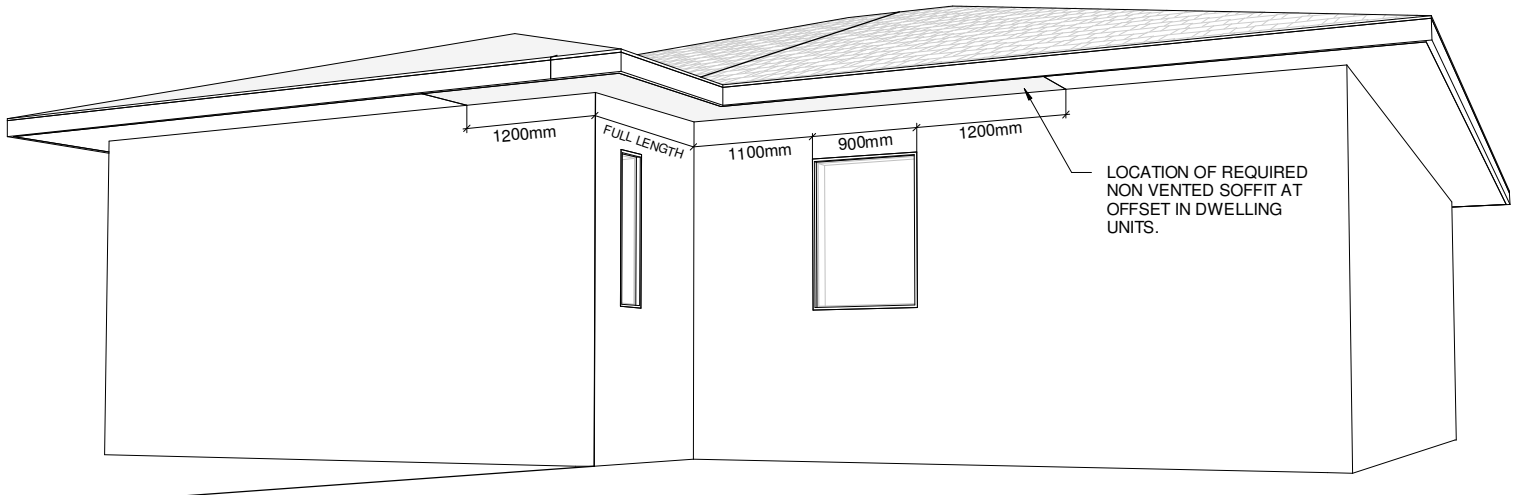


SECTION 1 - Typical 1hr Partywall



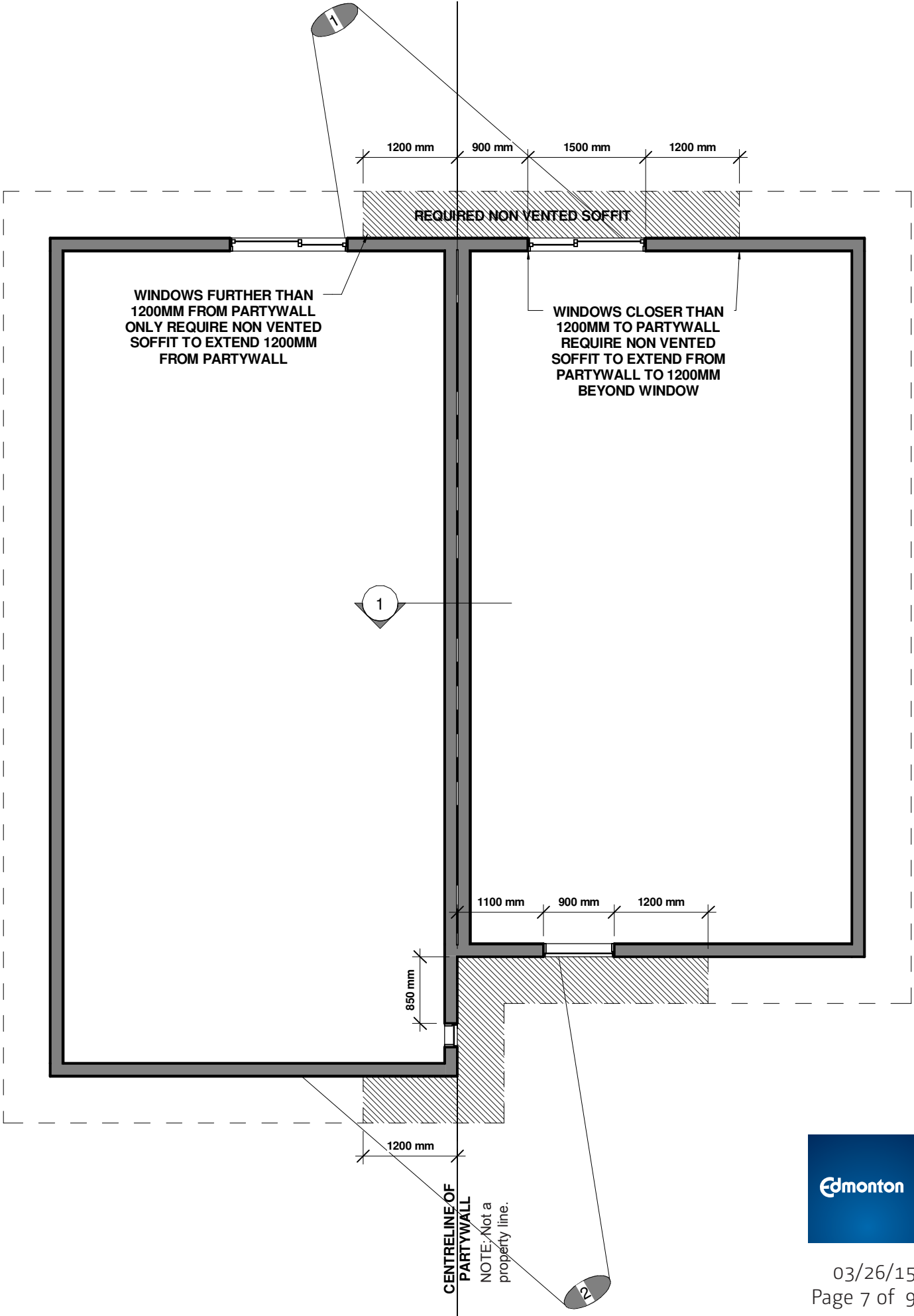


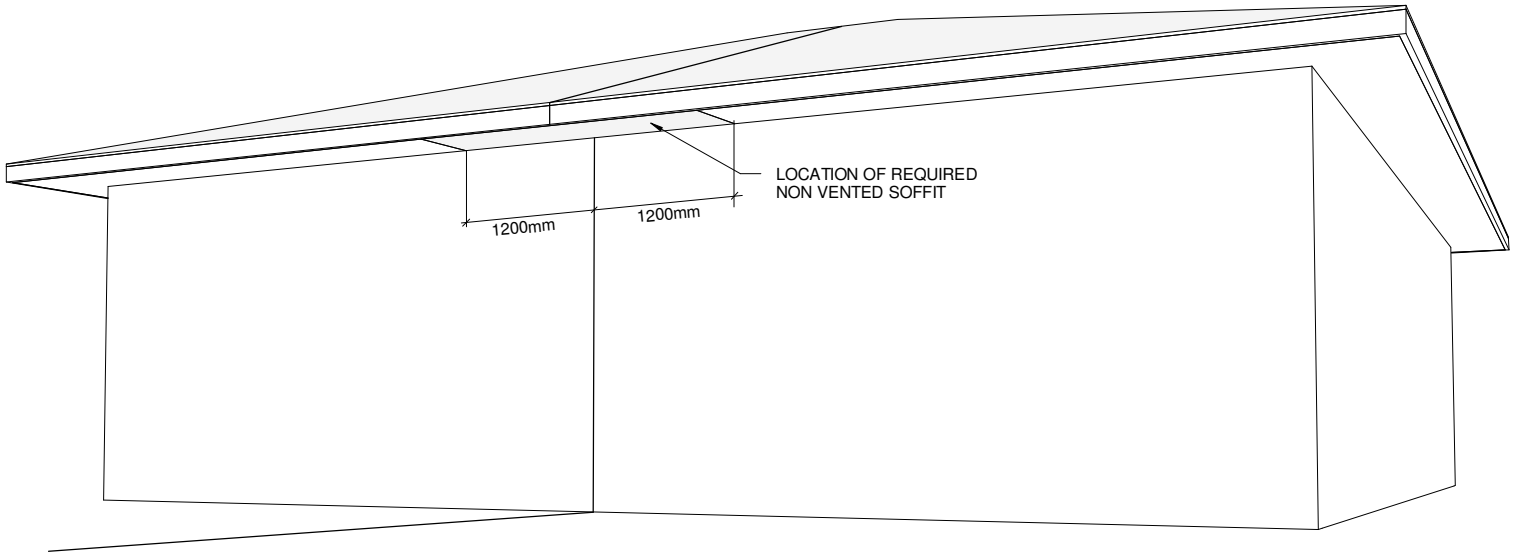
VIEW 1



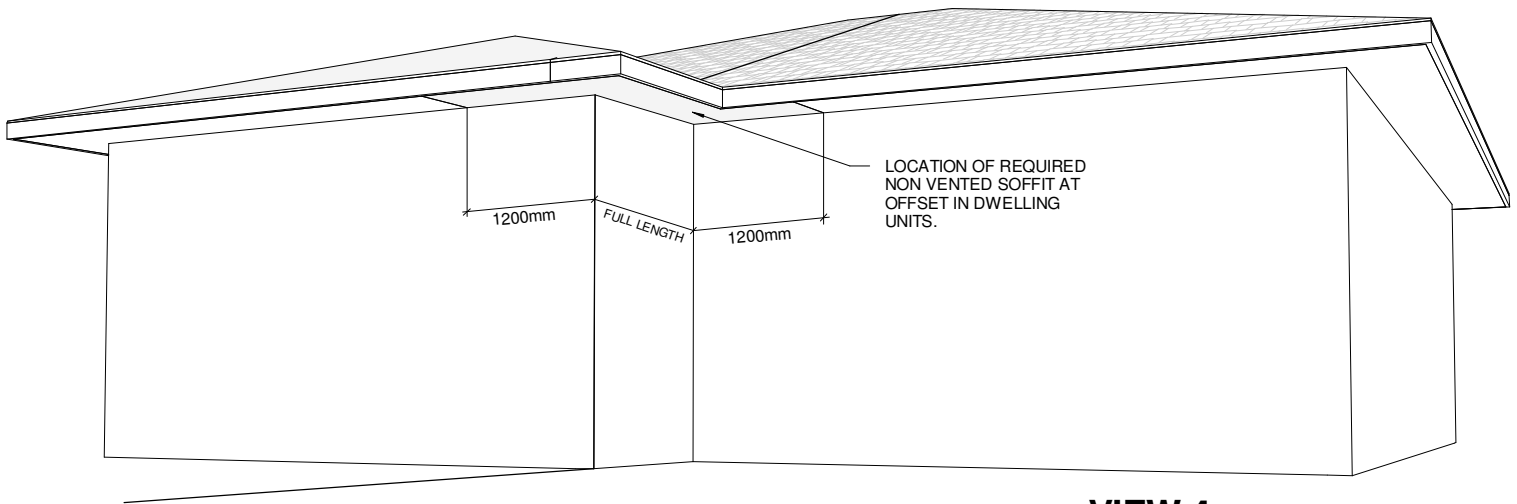
VIEW 2







VIEW 3



VIEW 4



