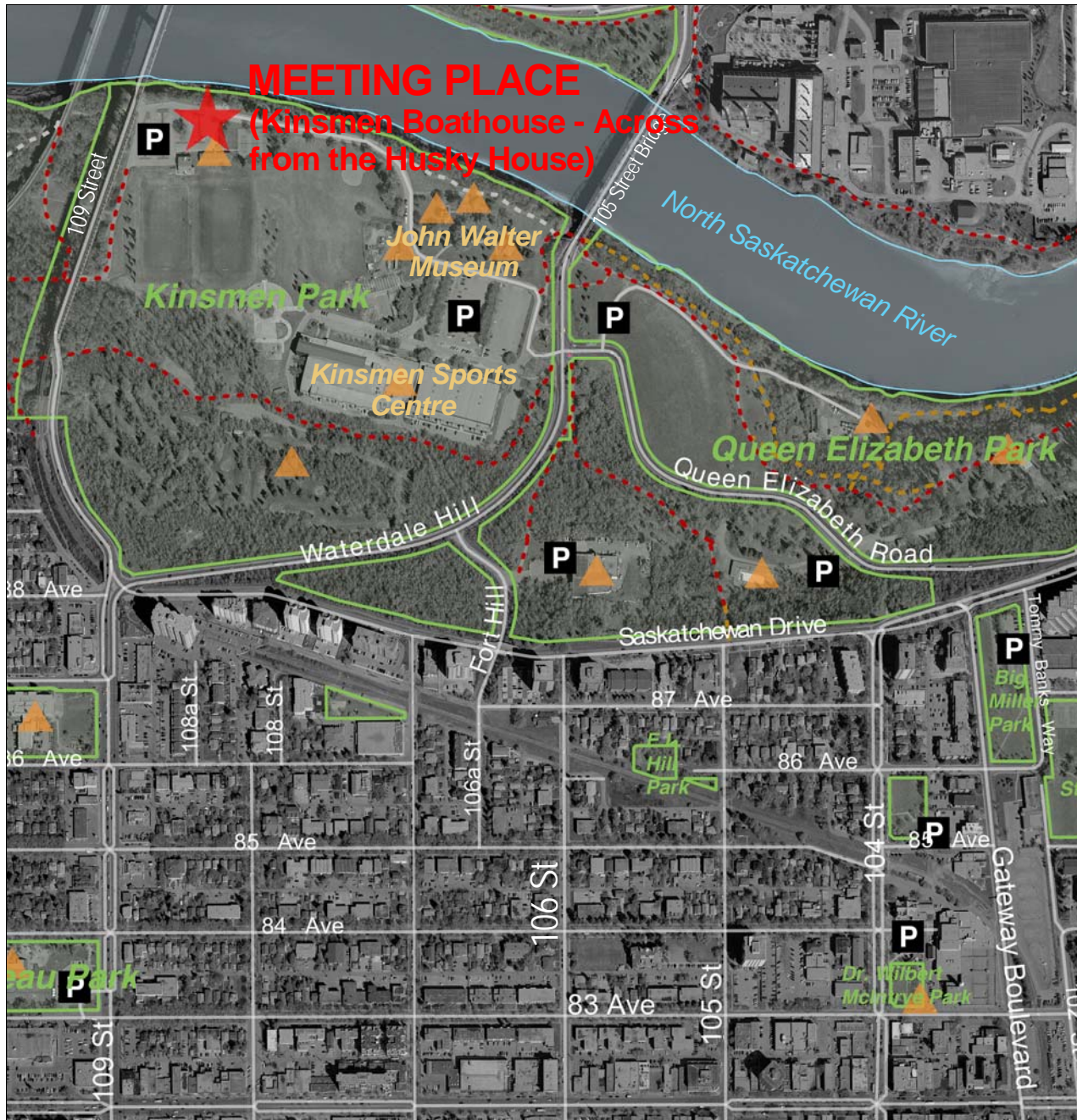









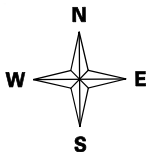
KINSMEN PARK - 9100 Waterdale Hill

Cycling / Cross Country Skiing



Legend

- | | | | | | |
|---|---------------|---|---------------|---|-----------------|
|  | Meeting Place |  | Blue Phone |  | Wood Chip Trail |
|  | Building |  | Paved Trail |  | Other Trail |
|  | Parking |  | Gravel Trail |  | Roadway |
| | |  | Natural Trail |  | Park Boundary |



The City of Edmonton disclaims any Liability for the use of this map. No reproduction of this map, in whole or in part, is permitted without express written consent of the City of Edmonton Community Services Department.

THE CITY OF
Edmonton

River Valley Programs
780-496-2983