



ROADS DESIGN & CONSTRUCTION UPDATE - JUNE 2013

The 2013 construction season kicked off in late April, with \$264.8 million invested in 10 major arterial roads sites, 22 arterial milling and overlay sites, and five bridges and interchanges. Eleven projects have carried over from 2012.

NEW ARTERIAL PROJECTS

34 AVENUE WIDENING

Impacts	<ul style="list-style-type: none">34 Ave (34 St to 48 St) and Mill Woods Road East (23 Ave to 38 Ave) reduced to one lane in each direction for roadway widening.
Dates	<ul style="list-style-type: none">Traffic reduction from June 17 to October 15.

63 AVE & ALLENDALE ROAD REHABILITATION

Activity	<ul style="list-style-type: none">EPCOR distribution, Telus relocations complete; EPCOR water relocations complete; ATCO Gas, street lighting and signal relocations will be done in conjunction with roadwork.
Impacts	<ul style="list-style-type: none">Road construction to begin in Late June/early July.Two-year project: 2013-14.

STONY PLAIN ROAD STREETSCAPE

Activity	<ul style="list-style-type: none">EPCOR completed lighting on the north side between 158 St and 156 St and installed new signals at 156 St in early June. EPCOR will continue east from 155 St on the north side.Walk, curb and gutter on the north side between 158 St and 155 Street removed; soil cement and gravel placed. Concrete pour began in late May.
Dates	<ul style="list-style-type: none">Two-year project: 158 St to west of 152 St in 2013; balance to 149 St in 2014.

ONGOING ARTERIAL PROJECTS

CENTRAL LRT REHABILITATION & JASPER AVENUE STREETSCAPE

Activity	<ul style="list-style-type: none">Demolition of roadways complete except remaining areas on 101 St.Removed existing CLRT smoke fan vent. Demolished and removed roof girder for new vent. Installed precast concrete girder into old vent location.Poured around 500 m³ of concrete in May; approximately 1/3 of station topping slab complete.
Dates	<ul style="list-style-type: none">Concrete roadway off of the station expected to be complete by end of June.

17 STREET UPGRADES (23 AVENUE TO SILVERBERRY ROAD)

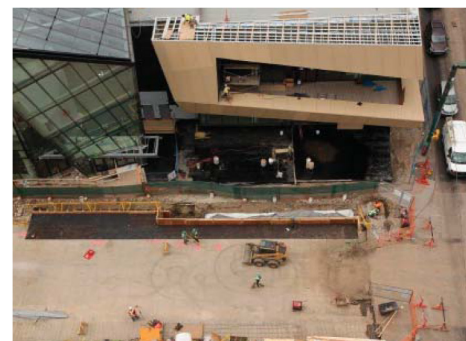
Activity	<ul style="list-style-type: none">Utility work, site grading, streetlight installations.
Impacts	<ul style="list-style-type: none">17 St and 23 Ave to Silverberry Road are completely closed until September. Detour using 34 St or 50 St.



17 STREET GRADING



112 AVENUE REHABILITATION



JASPER AVENUE STREETSCAPE

112 AVENUE REHABILITATION

Activity	<ul style="list-style-type: none"> Final rehabilitation work is being completed. Work includes asphalt overlay, concrete bus pads and remaining intersection improvements at 79 St and 112 Ave, as well as landscaping.
Dates	<ul style="list-style-type: none"> Work anticipated to be completed by mid-June.

118 AVENUE STREETSCAPE

Activity	<ul style="list-style-type: none"> South half of the road, bus turnaround grind and overlay, bus roadway pads, road top-lift and paving stone crosswalks.
Dates	<ul style="list-style-type: none"> In May the southwest corner of 106 St and 118 Ave opened to pedestrians. Completion of south side reconstruction by end of June. Project scheduled to be completed by August 15.

108 STREET STREETSCAPE

Activity	<ul style="list-style-type: none"> West sidewalk on 108 St (103 Ave to 104 Ave) has been removed. Rebuilding has begun.
Dates	<ul style="list-style-type: none"> 108 St and 102 Ave intersection opened Jun 7. Completion of 108 St between 103 Ave and 104 Ave anticipated for end of August.

UPCOMING ARTERIAL PROJECTS

- Guardian Road/Lewis Estates Boulevard construction scheduled to begin July 2.

NEW BRIDGE & INTERCHANGE PROJECTS**111 STREET/30 AVENUE SW BRIDGE**

Activity	<ul style="list-style-type: none"> Bridge deck has been poured. Roadwork is in progress.
Dates	<ul style="list-style-type: none"> Expected to open to traffic in late summer.

STONY PLAIN ROAD BRIDGE OVER GROAT ROAD

Activity	<ul style="list-style-type: none"> Bridge deck repairs underway.
Dates	<ul style="list-style-type: none"> Bridge expected to reopen to traffic by September 1.



66 STREET (AHD TO 195 AVE)



ROSSDALE ROAD BRIDGE



STONY PLAIN ROAD BRIDGE

ONGOING BRIDGE & INTERCHANGE PROJECTS

ROSSDALE ROAD BRIDGE

Activity	<ul style="list-style-type: none"> Concrete deck has been poured.
Dates	<ul style="list-style-type: none"> Bridge expected to reopen to traffic by late June.

WHITEMUD DRIVE/17 STREET INTERCHANGE

Activity	<ul style="list-style-type: none"> Roadwork has resumed.
Dates	<ul style="list-style-type: none"> Expected to open to traffic by late June.

66 STREET (ANTHONY HENDAY DRIVE TO 195 AVENUE)

Activity	<ul style="list-style-type: none"> Roadwork resumed in May.
Dates	<ul style="list-style-type: none"> Expected to open to traffic by late June.

UPCOMING BRIDGE & INTERCHANGE PROJECTS

41 AVENUE/QE II HIGHWAY INTERCHANGE

Activity	<ul style="list-style-type: none"> Public info session: Ellerslie Rd Baptist Church (10603 Ellerslie Rd) Tuesday, Jun 18, 4-8 p.m.
Dates	<ul style="list-style-type: none"> Construction anticipated to begin in July.

WALTERDALE BRIDGE

Activity	<ul style="list-style-type: none"> Bridge contract awarded to Acciona/Pacer joint venture May 29.
Dates	<ul style="list-style-type: none"> Construction anticipated to begin in early July.

23 AVENUE/GATEWAY BOULEVARD

Activity	<ul style="list-style-type: none"> Final 50 mm stone mastic asphalt (SMA) work remains.
Dates	<ul style="list-style-type: none"> Construction expected to begin in July.

Please note that all projected completion dates are weather permitting. Project details and updates are available at www.edmonton.ca/roadprojects. To view all 2013 construction go to www.edmonton.ca/constructiononyourstreets