

Heritage Valley District Park Draft Concept Plan

The City of Edmonton is planning a new district park that will serve the south Edmonton neighbourhoods in the Heritage Valley Area, and provide rentable and drop-in spaces for city-wide community and competitive sports and recreation activities.

The project is currently in the Concept Phase, with construction anticipated in two stages between 2021 and 2023.

We are looking for your input on the park design including amenities for now and potential amenities for the future.



Online survey: Please review the information and draft concept plans on the following pages and Share Your Voice by **clicking here**.

ADVISE

HERITAGE VALLEY DISTRICT PARK

Background

Heritage Valley District Park is a 30 hectare park located between 32 Avenue SW and 35 Avenue SW, and 127 Street and 135 Street. Similar to other district parks in Edmonton such as [Mill Woods District Park](#) and [Coronation District Park](#), the design is guided by the City's [Breathe: Green Network Strategy](#) and [Urban Parks Management Plan](#).

The new park will be home to Dr. Anne Anderson High School, which is currently under construction and scheduled to open in 2021; a Catholic high school, which is in the design phase of development and currently planned to open in 2023; and a future community recreation centre.

While there is no timeline on the development of the recreation centre, the public school will include indoor recreation facilities for use by the public until the community recreation centre is constructed.

The park will also include multiple sports fields and other amenities, which will be defined as a part of this project.

When the extension of the Capital Line LRT to the south is complete, the park will be within a five-minute walk of an LRT station.



HERITAGE VALLEY DISTRICT PARK

What is in the area

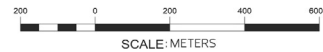
When thinking about the right mix of amenities for this park, planners consider what is already available in the area to avoid duplication and fill gaps.



LEGEND

- Baseball
- Tennis
- Ice Rink
- Playground
- Outdoor Fitness Equipment
- Picnic Area/ Gazebo
- Soccer
- Hockey
- Bike Trails
- Dog Park
- Fishing Pond

- Heritage Valley District Park Boundary
- Existing Neighbourhood Parks



1 – Macewan Park

- 1 - Playground
- 5 - Picnic Tables
- 1 - Pavilion
- 1 - Basketball Court
- 1 - Soccer Field
- Multi-Used Trail

2 – Johnny Bright School

- 2 - Playground
- 2 - Picnic Tables
- 1 - Pavilion
- 1 - Premier Diamond
- 1 - Soccer Field
- Paved Walkway

3 – Paisley Dog Park

- 1 - Dog Run
- 2 - Playground
- 6 - Picnic Tables
- Multi-Used Field
- Paved Walkway

4 – Chappelle Park

- 2 - Playground
- 1 - Pavilion
- 1 - Picnic Tables
- 1 - Outdoor Fitness
- 2 - Community Garden
- Multi-Used Field
- Multi-Used Trail

5 – Blackburn Park

- 2 - Playground
- 1 - Pavilion
- 3 - Picnic Tables
- Multi-Used Field
- Multi-Used Trail

6 – Roberta MacAdam School

- 3 - Playground
- 1 - Pavilion
- 3 - Picnic Tables
- 1 - Premier Diamond
- 1 - Soccer Field
- 1 - Basketball Court
- 1 - Cricket Court
- 1 - Rectangular Field
- Sled Hill

7 – Callaghan Park

- Paved Walkway
- Multi-Used Field

8 – Dr. Lila Fahlman School

- 1 - Playground
- 1 - Premier Diamond
- 3 - Soccer Field
- Outdoor Rink

HERITAGE VALLEY DISTRICT PARK

Draft concept plan

A draft concept plan has been developed based on City policy, input from site partners and what already exists in the area. These plans show what the future park could look like and what sports fields and other amenities may be included.

The location of some elements are set and not open to feedback, including:

- + Edmonton Public School Board's Dr. Anne Anderson High School (under construction; open 2021)
- + The future Edmonton Catholic School District high school (in design; planned to open in 2023)
- + The future community recreation centre (unfunded)
- + The Park Operations Yard (unfunded)

In addition, soccer fields, football fields and baseball diamonds will be included to support the needs of the two high schools. We would like your feedback to help us determine how the remaining park space can best meet the needs of the community both now and in the future.



HERITAGE VALLEY DISTRICT PARK

Draft Concept: Base + Shared + Enhanced-level development

This plan rendering shows what full build out of the park could eventually look like.



Shared Level Key Notes

- | | | |
|--|--|--|
| 1 U9 soccer pitch | 10 Outdoor classroom | 19 Splash park, playground and family area |
| 2 Combination Field (U17 - 100 yrd) | 11 Interior ring road | 20 Outdoor classroom/ informal skating loop with shelters and picnic area with fire pits |
| 3 High performance field w/ irrigation | 12 Park sign | 21 Central plaza with public art |
| 4 U11 baseball diamond | 13 Running track w/ track and field amenities | 22 Enclosed artificial turf field w/ lighting |
| 5 Full size ball diamond | 14 Tennis/pickle ball Court | Picnic shelter/ warming hut |
| 6 Shared use trails | 15 Basketball court | Picnic area w/ fire pit |
| 7 Indigenous healing garden | 16 Skate park | Fitness equipment |
| 8 Sliding hill | 17 0.81Ha Community league (Ice rink + informal skating) | Pavilion |
| 9 Multi-use field | 18 0.4 Ha Satellite operations yard w/ washroom | |

View the 3D video animation flythrough

HERITAGE VALLEY DISTRICT PARK

What to expect

This project includes development of the concept plan and the construction of the initial or base-level park amenities between 2021 and 2023. These amenities are determined based on City policies and the approved project budget, and include:

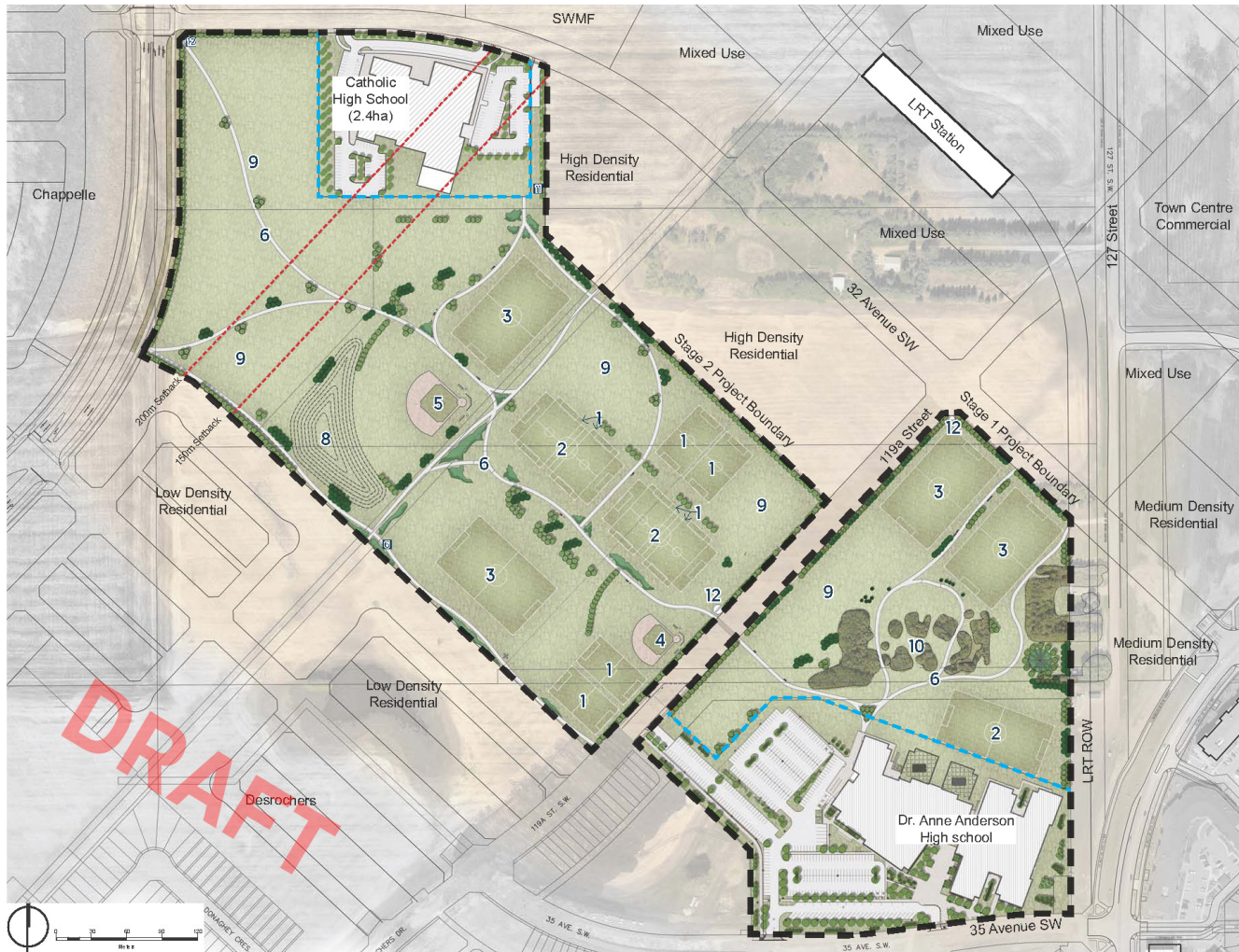
- + Sport fields (for example: soccer, football, baseball, basketball, cricket, at various standards)
- + Landscaped and passive recreation areas (areas for sitting, informal recreation, etc.)
- + Pathways and trails through the park and connecting to the neighbourhood
- + Tree plantings
- + Vehicle and bike parking
- + Park signage



HERITAGE VALLEY DISTRICT PARK

Draft Concept: Base-level development

This plan rendering shows the locations of the proposed base-level amenities only, which will be constructed between 2021 and 2023.



Base Level Key Notes

- | | | | |
|--|--------------------------|-----------------------------|-----------------------|
| 1 U9 soccer pitch | 4 U11 baseball diamond | 7 Indigenous healing garden | 10 Outdoor classroom |
| 2 Combination Field (U17 - 100 yrd) | 5 Full size ball diamond | 8 Sliding hill | 11 Interior ring road |
| 3 High performance field w/ irrigation | 6 Shared use trails | 9 Multi-use field | 12 Park Sign |

▶

View the 3D video
animation flythrough

HERITAGE VALLEY DISTRICT PARK

Over time the park will evolve. The concept plan will allocate space to the desired future amenities so they can be constructed when City funding becomes available, or in partnership with community programs, initiatives or organizations.

There are many possible future shared-level and enhanced-level amenities: children's playground, spray park, BMX park, dog off-leash area, lawn bowling green, outdoor gym / bootcamp amenities and ice skating loop. More examples can be found in the online survey.

Your input will be used to help shape the overall concept plan, including the base-level amenities and the amenities that will be constructed in the future. The final concept will be shared later this year.

What's next

August 2020	What We Heard Report Final concept plan confirmed
Spring 2021	Stage 1 base-level construction begins
Spring 2022	Stage 2 base-level construction begins
Fall 2023	Base-level construction complete



Once you have reviewed the information and draft concept plans in this booklet, please Share Your Voice by **clicking here**.

Engagement activities are at the ADVISE level on the City's Public Engagement Spectrum. For more information, visit edmonton.ca/publicengagement.