

What We Heard

Lendrum Place 115 Street Shared-use Path

Engagement dates:
October 23 – 30, 2020

February 2021

ADVISE

SHARE YOUR VOICE
SHAPE OUR CITY

Edmonton

Background

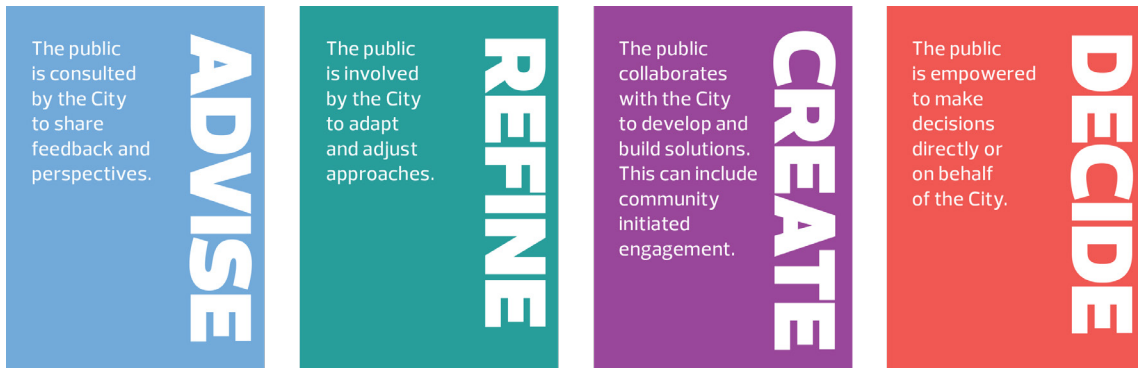
In coordination with the Malmo Plains Neighbourhood Renewal project, the west side of 115 Street that runs along 51 Avenue to 60 Avenue in Lendrum Place has been identified to complete a key active transportation link with a shared-use path. This key piece of infrastructure will allow users, of all ages and abilities, to continue their travels north of 60 Avenue to the existing shared-use path that connects with the University of Alberta's South Campus, and south of 51 Avenue where a shared-use path will be installed in Malmo Plains.

Beginning in 2021, Malmo Plains will experience Neighborhood Renewal. The Neighbourhood Renewal Program will rehabilitate roads, replace street lights, curb and gutters, repair sidewalks and connect missing active transportation links where possible.



Public Engagement Spectrum

The City's Public Engagement Spectrum defines the public's level of influence during the engagement process.



— We are here —

What We Asked

We asked the public to **ADVISE** on where they would like the shared-use path installed and what should be taken into consideration by the project team when deciding on where to install the shared-use path. Residents of Lendrum Place and Malmo Plains along with other stakeholders were engaged at two pop-up engagement events on location at 115 Street. They also had the opportunity to complete an online survey.

The public was asked to **ADVISE** on two different options as pictured on the next page. The questions we asked were what participants liked and did not like about each option. We also asked the public what else the Project Team should take into consideration when designing and constructing this new shared-use path.

Participation for the events and survey were:

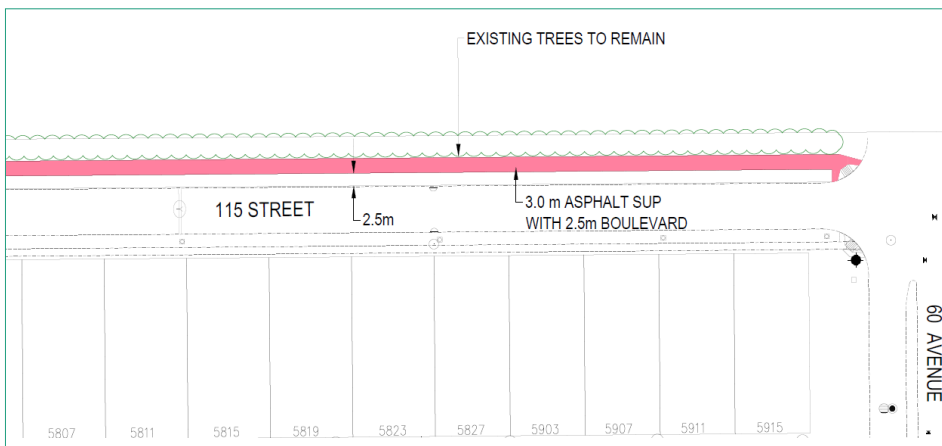
Pop-up event #1	Sunday, October 25, 2020	40 participants
Pop-up event #2	Wednesday, October 28, 2020	35 participants
Online Survey	October 23, 2020 – October 30, 2020	103 respondents

How we Promoted

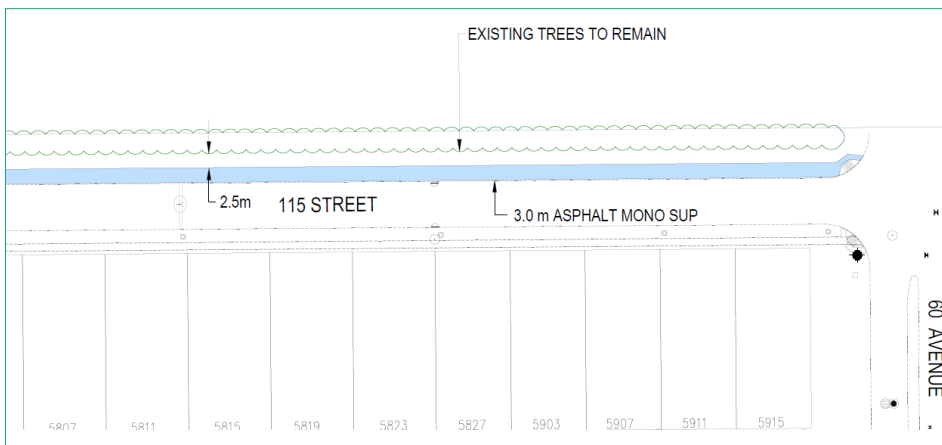
To promote the engagement opportunities, letters and emails were sent out to the residents along the east side of 115 Street as well as to a number of stakeholders including: University of Alberta, Paths for People, School for the Deaf, Bike Edmonton and the Lendrum Place Community League. A poster and letter were sent to the Community League for distribution

to the Lendrum Place community email list and to post online on the Lendrum Place Facebook page. A sign was also installed on 115 Street, near 51 Avenue, to promote the engagement events and online survey which was posted on the Malmo Plains website during the Malmo Plains Neighbourhood Renewal Engagement from October 23 to October 30, 2020.

Option 1: Shared-use path – Boulevard



Option 2: Shared-use path – Along the Curbline



What We Heard

The following is an overview of the common themes we heard through our public engagement.

Option 1: Shared-use path – Boulevard

Like	Don't Like
Grass buffer provides separation from road and vehicles	Takes up existing green space which some people currently use and enjoy
Trees remain intact	Too close to the trees
Grass and green space on both sides	Not a lot of space left for dog walkers and cross-country skiing
Keeps people who bike off the road	Width of path accommodates people who walk and people who bike

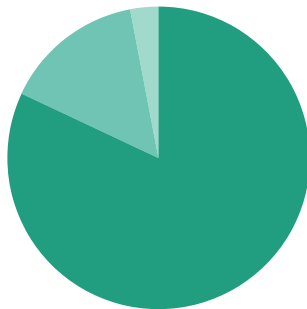
Option 2: Shared-use path – Along the Curbline

Like	Don't Like
Majority of current green space remains intact	Too close to the road
Trees remain intact	Potential for snow to get plowed onto the pathway
Leaves room for cross-country skiers and dog walkers	Potential safety conflict with cars on the road (ie. dooring) if people park on the west side of the road
Width of path and green space accommodates all users	



Support from the Public

There is general support for the installation of the shared-use path regardless of which option is chosen.

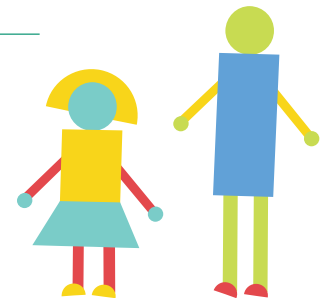


- 82%** supported installation of shared-use path
- 15%** did not support installation of shared-use path
- 3%** were neutral

Other Considerations

We also provided an opportunity for the public to provide feedback on other considerations that the project team should be taking into account. These included the following:

Snow removal and maintenance	Ensuring the path is prioritized and cleared accordingly
Access points	Having ample access points and mid-block crossings at various locations along 115 Street
Consider users other than people who walk and bike	This includes people who may use the existing space to cross-country ski and walk their dogs, as well as those who may rollerblade, skateboard, longboard, etc.
Lighting	Consider lighting requirements
Traffic and safety	Upgrades to the intersections at 51 Avenue and 60 Avenue to allow for safe crossing at these locations for all users



Next Steps

The project team will consider the feedback gathered from these engagement activities to make an informed decision that provides a balance between existing City of Edmonton policies, technical considerations and public input.

The design for the shared-use path will be shared back with the public in coordination with the pre-construction event for Malmö Plains Neighbourhood Renewal in early 2021.



Working together to make the most out of your neighbourhood.

This is your city and your neighbourhood. We want to understand how you experience your neighbourhood and ask for your input on what we might do to make it better.

We will engage and work with you on the renewal of roads, sidewalks, street lights, and park spaces, and promote other community opportunities to enhance how people live and interact in your neighbourhood. We commit to being open and transparent about how your input is used. Let's make the most out of your neighbourhood.

edmonton.ca/BuildingMalmöPlains

SHARE YOUR VOICE
SHAPE OUR CITY

Edmonton